



Pay For Water System

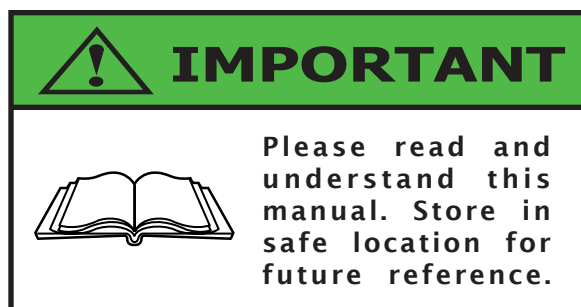
DU 1A046B



Owner's Manual #0815 012913

Serial Number:

Installation Date:



Everyone who operates this unit should understand basic operations and safety precautions! The time you take to fully understand the proper installation, maintenance and use of the machine will prolong its service life, and assure you of trouble free operation.

When unpacking, check to make sure all the parts shown on the Parts Breakdown near the end of this manual are included. If any parts are missing or broken, please call Dultmeier Sales as soon as possible.

Consumers should notice that this manual may differ slightly from the actual product as more improvements are made to our products. Some of the pictures in this manual may differ slightly from the actual product as well. Dultmeier Sales reserves the right to update designs and / or change the specifications at any time without incurring any obligation to install them on units previously sold.

If you have any questions or suggestions about this manual, please contact us.

Table of Contents

Safety Information	1
Setup Instructions	2
Plumbing/Testing	3
Electrical Diagram	4
Parts Breakdown	5
Warranty Information	6

To avoid serious or fatal personal injury or major property damage, read and follow all safety and operation instructions in the manual.



This is a **Safety Alert Symbol** -

When you see this symbol in the manual, look for the following signal words & be alert to the potential for personal injury or property damage.



Warns of potential hazards that **WILL** cause serious personal injury, death or property damage.



Warns of potential hazards that **CAN** cause serious personal injury, death or property damage.



Warns of potential hazards that **WILL** or **CAN** cause minor personal injury, death or property damage.



Indicates special instructions that **MUST** be followed but not related to hazards.

**This manual is intended to assist in the installation and operation of this unit.
Do not attempt to operate this unit without reading and understanding this manual.**

General Safety

To avoid the risk of serious bodily injury and property damage, read safety instructions carefully before installing this system. Follow all local and/or national plumbing and electrical codes when installing.



Do Not Allow System or Components to Freeze.

To do so may damage the system and will void the warranty.



Risk of Electric Shock.

Keep the unit dry at all times -

Do not wash the motor or electrical panel or allow the unit to sit in standing water.

Use only Ground Fault Circuit Interrupter (GFCI) protected grounded outlet for the cord plug. If you must use an extension cord, use only UL approved indoor/outdoor, 3-wire, grounding type cords. The cord must be rated to support amp draw. Do not allow any part of cord or receptacle ends to sit in water.

To avoid fatal shocks, proceed as follows if service is needed:

- A. Turn off water to the system.
- B. Disconnect the power at main electrical service before unplugging the unit.
- C. Ground the electrical outlet box.
- D. Take extreme care when changing fuses.

Setup Instructions

1. Mount the 1A046B Control Panel in a convenient location. Locate near 120 volt power supply.
- The DU 1A046B is supplied with a 25' control cable to run a 24 volt KZ Water Control Valve. It is suggested to install the valve within reach of the control cable. If this is not possible and extension harness can be ordered. See Parts Breakdown for part numbers needed, order cable to specific length.
2. Select Location for the 1A046B coin meter. It is suggested to mount the coin meter box approx. 48" from the ground.



Check local electrical codes for proper installation.

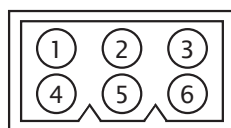
3. Have electrician run wiring from coin meter to control panel (**Fig 1-A**). Install wire through fitting provided. Use same color scheme to aid in installation.
4. Following the diagram below, terminate wires in the control panel using the provided Wago Tool (**Fig 1-B**).

#1.....	Pink.....	24V
#2.....	White.....	24V Com
#3.....	Black	Load
#4.....	Grey/Black.....	Load Control
#5.....	Orange	N/A
#6.....	Brown.....	Coin +



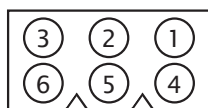
Color Scheme does not always match from component to component. See label inside control box and/or coin meter box for reference.

#1.....	Pink
#2.....	White
#3.....	Black
#4.....	Grey/Black
#5.....	Blank
#6	Brown



Coin Meter Box View
Looking at Female Pins

#1.....	Pink
#2.....	White
#3.....	Black
#4.....	Grey/Black
#5.....	Blank
#6	Brown



Installer's View
Looking at Male Pins

figure 1

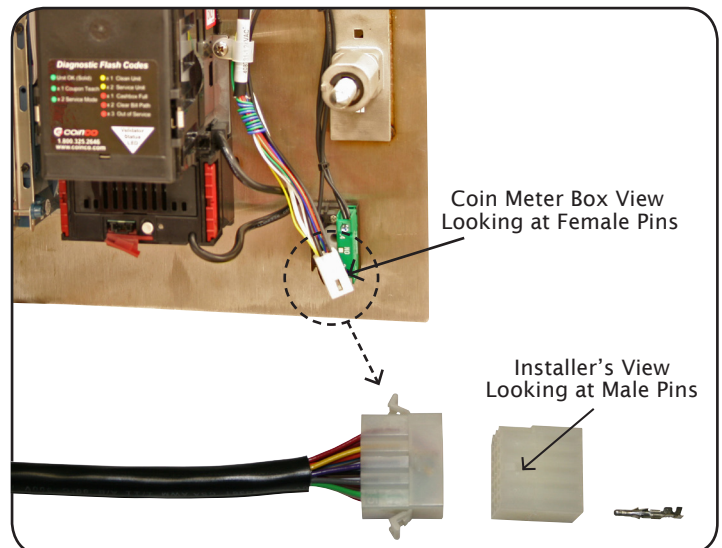
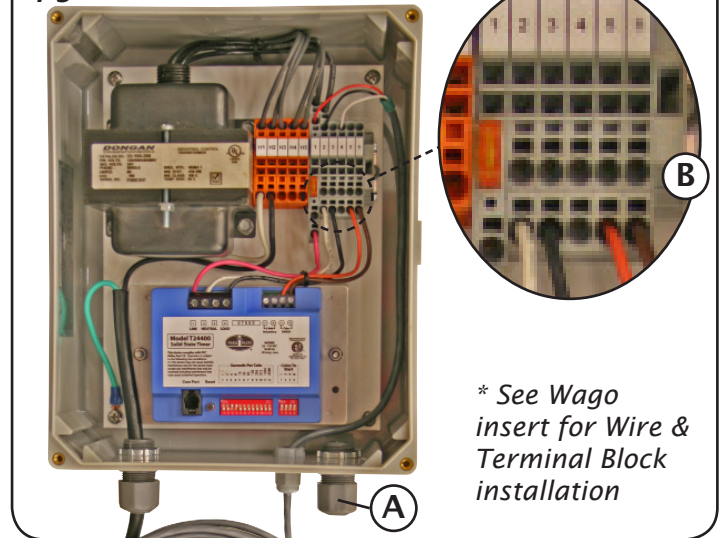
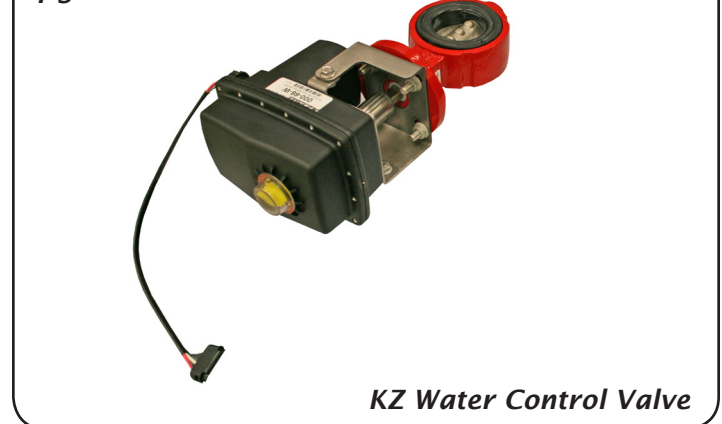


figure 3



Plumbing

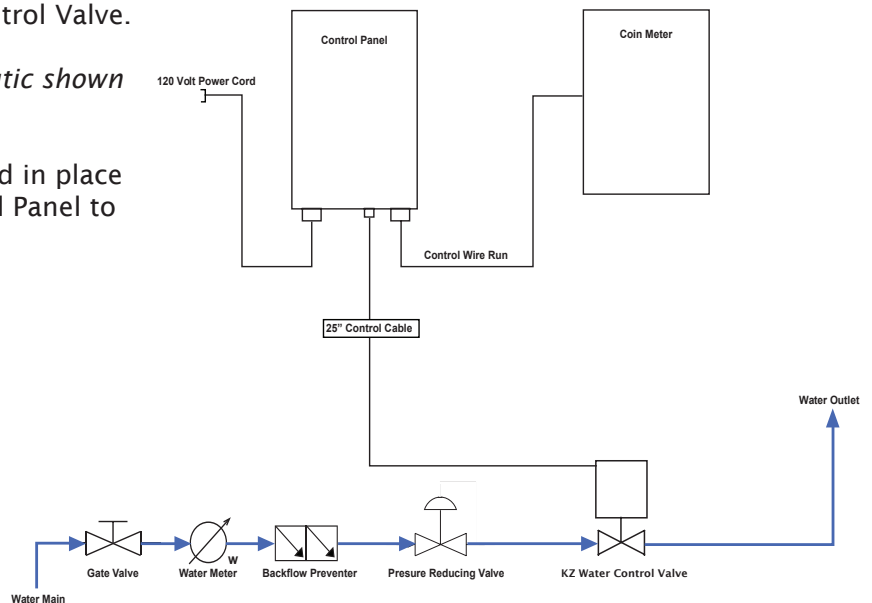


Check local plumbing codes for proper installation.

1. Have a plumber install the KZ Water Control Valve.

Due to various installations, use schematic shown for example only.

2. With the KZ Water Control Valve plumbed in place connect 4 pin Weatherpack from Control Panel to KZ Water Control Valve (**Page 2, Fig 3**).
3. Inspect all fittings and wiring.



Testing

1. Turn main water supply to KZ Water Control Valve ON.
2. Turn On-Off Switch to the OFF position. (**Fig. 4-A**)
3. With all control cables connected, plug in the 120V power cord. At this time the coin/bill meter will power up. Wait approx. 15 seconds.
4. Using the coin slot, insert the pre-determined amount of coins. (**Fig. 4-B**) When that amount is reached the timer light will illuminate. (**Fig. 4-C**)
5. With the timer light lit turn the On-Off Switch to the ON position. Water should now flow from the KZ Water Control Valve to its end destination.
6. Now turn the On-Off Switch to the OFF position. Water should now stop flow at the KZ Water Control Valve.
7. Let the timer run down until the timer light turns off. No water should flow through the KZ Water Control Valve, even if the ON/OFF switch is turned to ON.
8. Repeat steps 5,6 and 7 using the bill validator.



If the amount of money put in exceeds the pre-determined dollar amount NO change will be given.

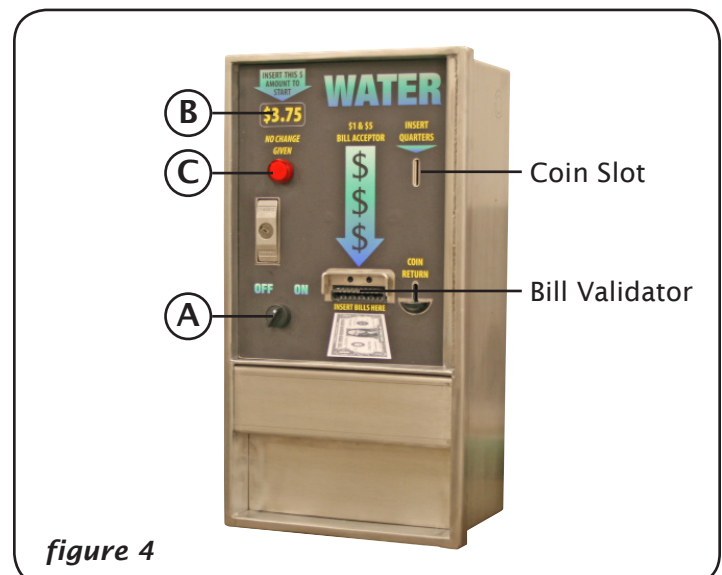
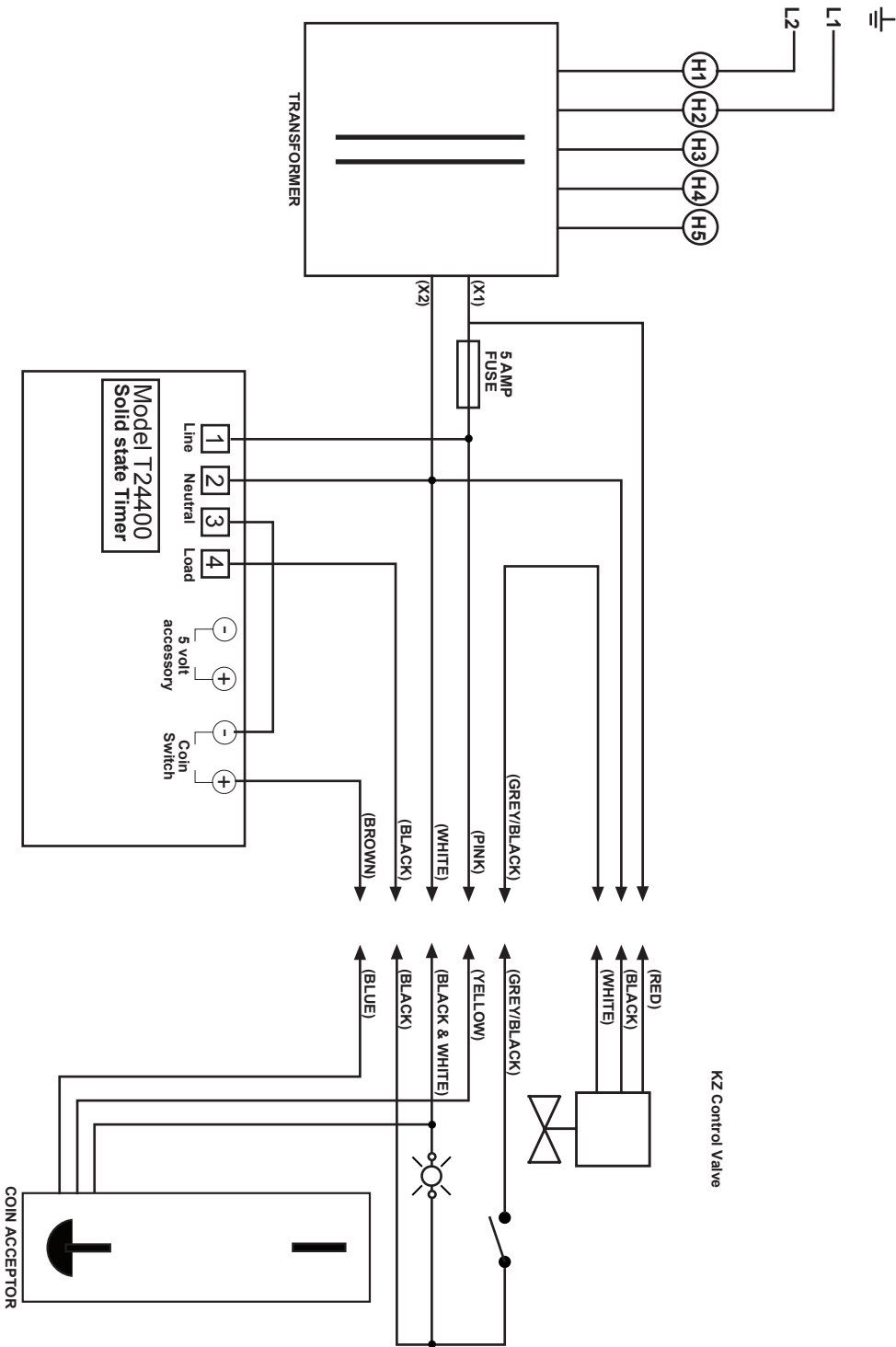


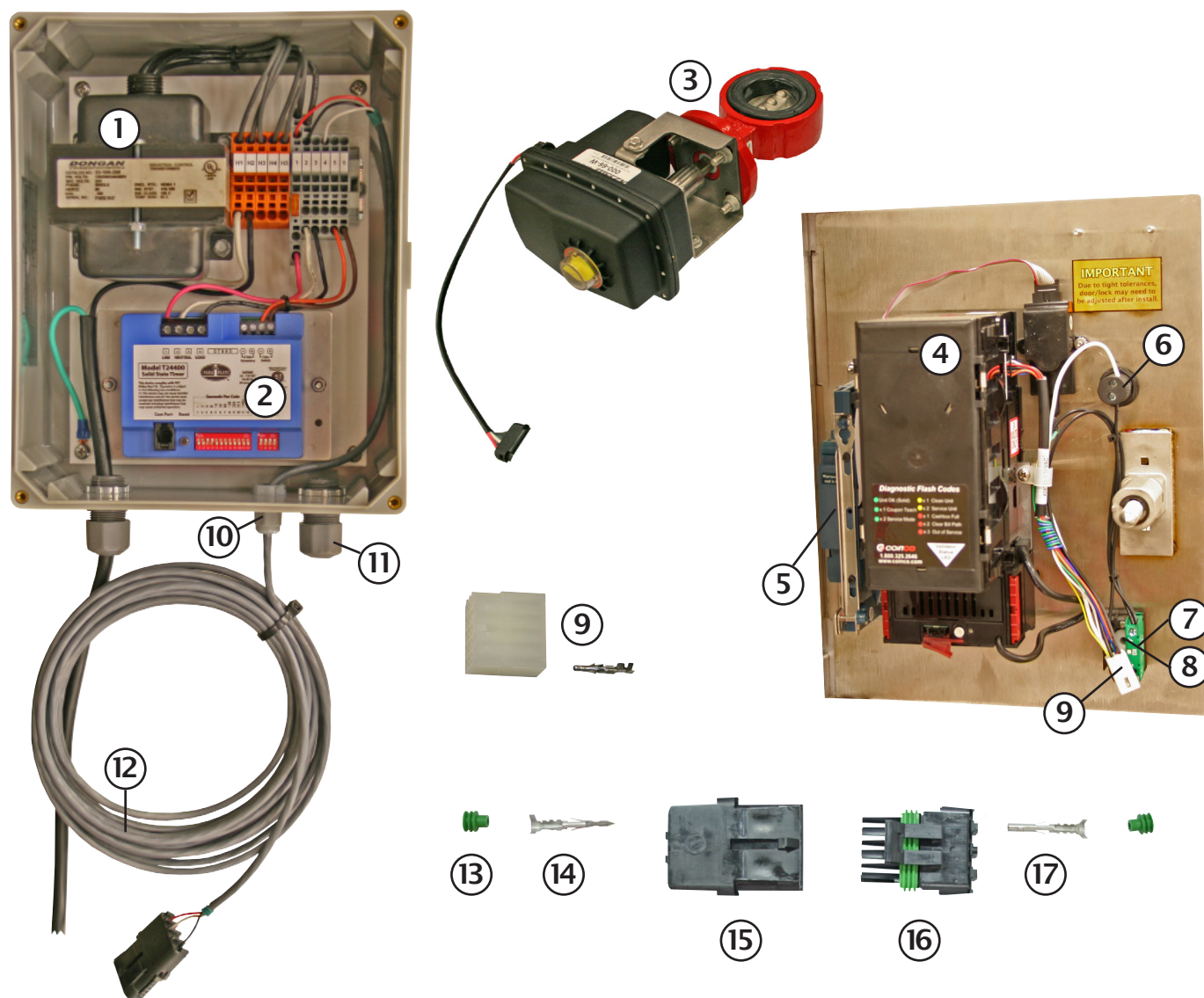
figure 4

Electrical Diagram



DULTMEIER SALES			
PROJECT:	DU 1A046A,B	DRAWN BY	JC
TITLE:	WIRING DIAGRAM	REV	--
DRAWN NO.	EWD-0815/822	SHEET	PAGE 1 OF 1

Parts Breakdown: DU 1A046B



Item	Part Number	Description
1	GO 33100208	Transformer, 24V
2	UP 24400	Paraplate Timer, 24V/110V
3	KZ 59166W	Butterfly Valve, 24V, 2"
4	AV VL62B	Vantage Bill Acceptor, 24V
5	DX QLC	Microcoin Mech Complete
6	CE 8LP2TILB4	Red Led, 24V
7	CE 8LM2TC10	Contact Element
8	CE 8LP2TS120	Selector Switch
9	UT 6PINMOLEX	6 Pin Molex Connector, Male & Female, with Pins
10	UT LPCG25	Strain Relief
11	UT LPCG50	Strain Relief
12	UT 18/4	Control Cable, Specify Length & Use Items 13, 14, 15, 16 & 17
13	RV WPS-GRN	Weatherpack Dust Seal (<i>Order 8 qty for Control Cable</i>)
14	RV WPM-15	Weatherpack Pins, Male (<i>Order 4 qty for Control Cable</i>)
15	RV WPT4	4 Port Weatherpack, Male
16	RV WPS4	4 Port Weatherpack, Female
17	RV WPF-15	Weatherpack Pins, Female (<i>Order 4 qty for Control Cable</i>)
	BR W-50092070	Replacement Wago Screwdriver (<i>Not Shown</i>)
	UT 18TFFN-_____*	18 AWG Colored Wire (<i>Not Shown</i>) *specify color & order per foot



Notice Regarding Manufacturer's Limited Warranty

Dultmeier Sales Limited Liability Company (hereinafter Dultmeier), notifies you that component part(s) carry a manufacturer's limited warranty provided by the manufacturer of said component part(s). These warranties do not pertain to normal wear of component part(s) that may occur within any specified period. While Dultmeier is not the manufacturer of any of the component part(s), Dultmeier will assist you in processing any and all manufacturer's warranty claim if applicable and available. Any and all manufacturer's claims must be submitted in writing to the manufacturer within the warranty periods provided by the manufacturer.

Defective component part(s) that are to be considered for manufacturer's limited warranty must be returned to the manufacturer by prepaid shipment with the applicable manufacturer's limited warranty period. If the component part(s) are deemed to be defective under the manufacturer's warranty, Dultmeier will assist in obtaining a replacement or repair of the component part(s). Said component part(s) will be returned F.O.B. Omaha, Nebraska. Replacement or repair shall be the exclusive remedy for any breach of warranty. Labor for installation, either with respect to original or replacement part or components, is not covered under the manufacturer's limited warranty.

Neither the manufacturer nor Dultmeier warrants loss of income or consequential damages for injury or commercial loss resulting from any breach of warranty or warranties stated above.

The manufacturer's limited warranty as stated does not apply to component part(s) which have been improperly installed, misused, altered, neglected, abused or not installed, adjusted, maintained, or used in accordance with applicable codes and ordinances and in accordance with the manufacturer's specifications as to such factors.

Notwithstanding Dultmeier's willingness to assist in the processing of the manufacturer's limited warranty, Dultmeier makes no warranty against infringement of the like, makes no warranty of merchantability, makes no warranty of fitness for a particular purpose, and makes no other warranty, express or implied, including implied warranty arising from the course of dealing or usage of trade.

Compliance with all local, state and federal codes regarding the installation and operation of said equipment, parts and components shall be the responsibility of the purchaser. The rights and obligations of the parties shall be governed by the laws of the State of Nebraska.