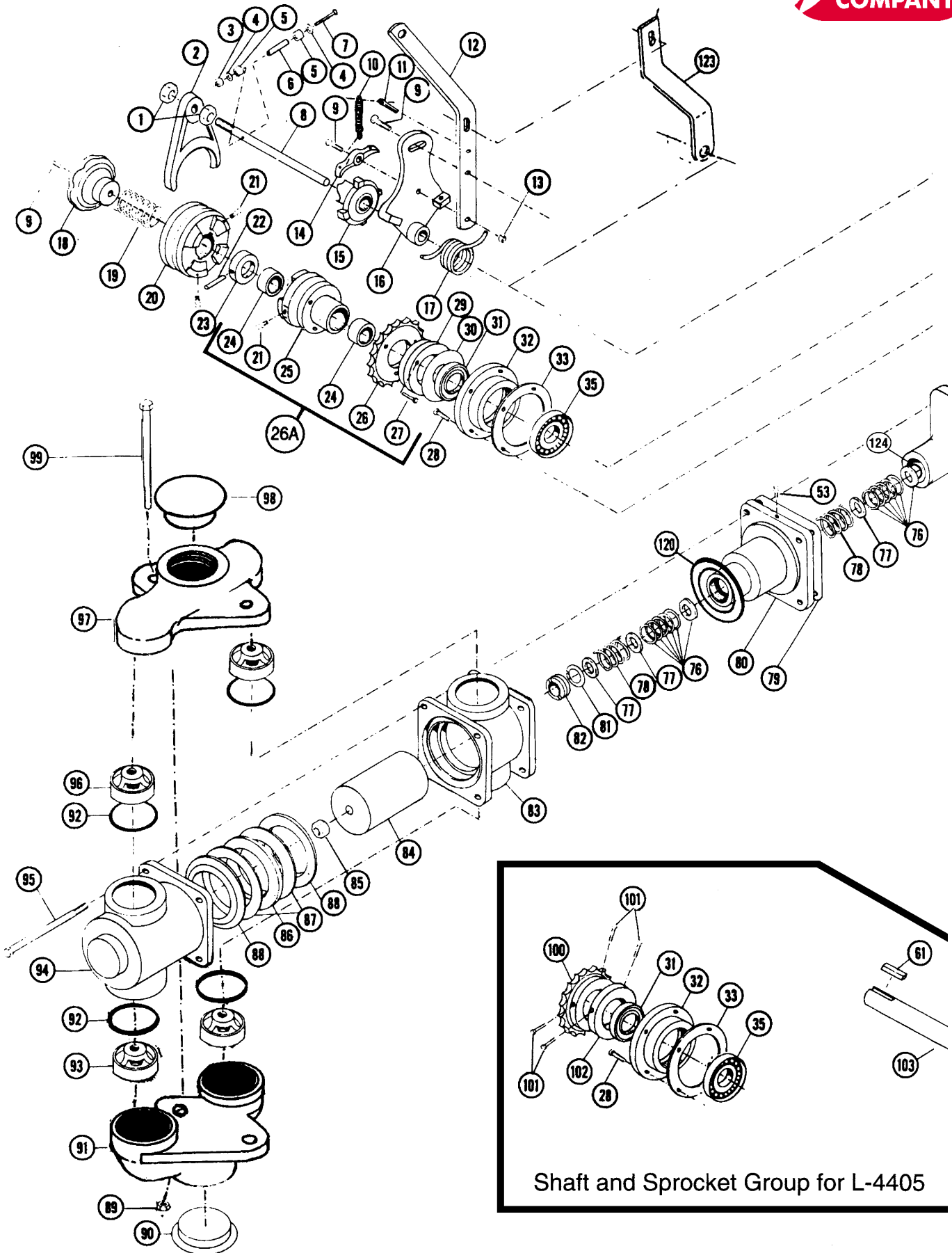
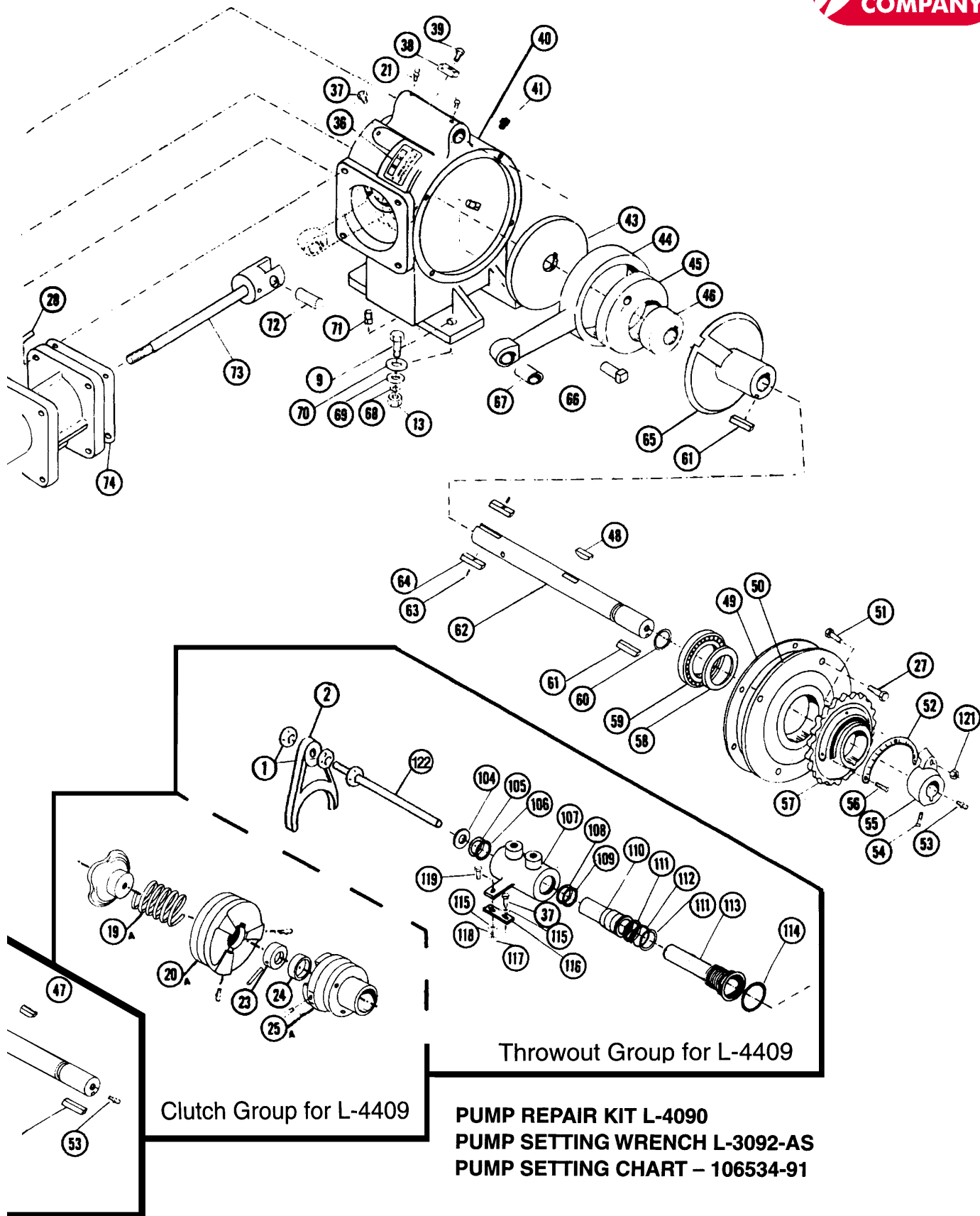


Model L-4400 Series Metering Pump



Model L-4400 Series Metering Pump



Model L-4400 Series Metering Pump

Parts for High Speed L-4400-HS Series Pumps Only



REF. NO.	PART NO.	ITEM DESCRIPTION	L-4400-HS SERIES			REF. NO.	PART NO.	ITEM DESCRIPTION	L-4400 QTY	L-4405 QTY	L-4409 QTY
			L-4400 QTY	L-4405 QTY	L-4409 QTY						
1	92037	5/8" JAM NUT	2	0	2	61	L-1020	SETTING ARM KEY	2	3	2
2	L-3065	THROW-OUT YOKE	1	1	1	62	L-4012	CRANKSHAFT	1	0	1
3	92014	#10 SQUARE NUT	1	0	0	64	A-261	SQUARE KEY	2	0	2
4	A-697	WASHER	2	0	0	65	L-3056	STROKE LOCATING SLV.	1	1	1
5	A-2762	CAM ROLLER	2	0	0	66	L-3004	ECCENTRIC PIN	1	1	1
6	A-2763	ROLL PIN	1	0	0	67	113588-01	CONNECTOR ROD BUSHING	1	1	1
7	90953	2 1/4 RD HD SCREW	1	0	0	68	93024	3/8 LOCK WASHER	4	4	4
8	L-4011	THROW-OUT ROD	1	0	1	69	93011	3/8 FLAT WASHER	4	4	4
9	90655	3/8 X 1 1/2 HEX BOLT	7	4	5	70	A-147	LEG MOUNTING PAD	4	4	4
10	F-48	THROW-OUT LEVER SPRING	1	0	0	71	C-431-B	PLUG	3	3	3
11	94010	5/32 X 1 COTTER PIN	1	0	0	72	105895-01	CROSSHEAD PIN	1	1	1
12	L-3064	THROW-OUT LEVER	1	0	0	73	105900-91	PISTON ROD ASSEMBLY	1	1	1
13	92024	3/8 HEX NUT	10	8	8	74	L-3052	CROSSHEAD GDE. GASKET	1	1	1
14	A-2758-A	PAWL	1	0	0	75	111935-01	CROSSHEAD GUIDE	1	1	1
15	A-2757-A	THROW-OUT CAM	1	0	0	75A	111943-01	O'RING **NOT SHOWN	1	1	1
16	L-3007	THROW-OUT BRACKET	1	0	0	76	L-1109	ROD VEE PACKING SET	2	2	2
17	114165-01	R H TORSION SPRING	1	0	1	77	L-1041	WASHER	3	3	3
18	A-50	HANDWHEEL	1	0	1	78	L-1063	PACKING SPRING	2	2	2
19	HA-57	SAFETY CLUTCH SPRING	1	0	0	79	L-3074	STUFFING BOX GASKET	1	1	1
19A	108907-01	SAFETY CLUTCH SPRING	0	0	1	80	111937-01	OUTBOARD STUFFING BOX	1	1	1
20	A-260	CLUTCH	1	0	0	81	L-1042	RETAINING RING	1	1	1
20A	108905-91	CLUTCH	0	0	1	82	L-1031-2	STUFFING BOX INSERT	1	1	1
21	H-28	GREASE FITTING	5	2	5	83	111938-01	INBOARD CYLINDER	1	1	1
22	L-4249	DRIVE PIN	1	0	1	84	112816-91	PISTON PLUNGER ASSY	1	1	1
23	105373-01	CLUTCH COLLAR	1	0	1	85	L-1047	SELF-LOCKING NUT	1	1	1
24	A-116	OILITE BUSHING	2	0	2	86	L-1044	FLANGE PACKING WASHER	1	1	1
25	L-4008-A	CARRIER	1	0	0	87	L-1098	PACKING ADJ. GASKET	2	2	2
25A	108910-91	CARRIER	0	0	1	88	L-1045-V	FLANGE PLUNGER PACKING	2	2	
26	L-4007	18T SPROCKET (OR)	1	0	1	89	92028	HEX NUT	2	2	
26A	L-4006	16T SPROCKET	1	0	1	90	L-3115	1/2 PLASTIC PLUG	1	1	1
	L-4005	18T SPROCKET	1	0	0	91	111945-01	SUCTION MANIFOLD	1	1	1
	108909-91	18T SPROCKET	0	0	1	92	A-2848	VALVE O'RING	4	4	4
27	90993	1/4 X 1 1/2 BOLT	3	0	3	93	109112-92	SUCTION VALVE ASS'SY	2	2	2
28	90637	5/16 X 1 HEX BOLT	12	12	12	94	111940-01	OUTBOARD CYLINDER	1	1	1
29	L-4009	RETAINING COLLAR	1	0	1	95	91051	3/8 X 8 HEX BOLT	4	4	4
30	110155-01	WASHER	1	1	1	96	109113-92	DISCHARGE VALVE ASS'SY	2	2	2
31	L-1018	OIL SEAL	1	1	1	97	111944-01	DISCHARGE MANIFOLD	1	1	1
32	L-3023	BEARING HOUSING	1	1	1	98	A-3223	PLASTIC PLUG	1	1	1
33	L-3021	BEARING H'SING GASKET	1	1	1	99	91051	3/8 X 8 HEX BOLT	2	2	2
35	L-3019	CRANKSHAFT BEARING	1	1	1	100	106532-01	SPROCKET	0	1	0
36	106537-01	NAME PLATE	1	1	1	101	90986	3/8 X 5/8 SCREW	0	4	0
37	90634	5/16 X 1/2 HEX BOLT	1	2	1	102	110147-01	SPACER	0	1	0
38	L-4014	SPRING ANCHOR	1	0	0	103	103453-02	CRANKSHAFT	0	1	0
39	90636	5/16 X 3/4 HEX BOLT	1	0	1	104	93016	SAE FLAT WASHER	0	0	1
40	L-4013	CRANKCASE ASSEMBLY	1	1	1	105	105448-01	BACK UP RING	0	0	1
41	S-350	VENT PLUG	1	1	1	106	A-3776	O'RING	0	0	1
43	L-3020	CRANKSHAFT DISC	1	1	1	107	105447-01	BODY	0	0	1
44	L-3026-A	CONNECTING ROD	1	1	1	108	105452-01	BACK-UP RING	0	0	1
45	L-3016	LARGE ECCENTRIC	1	1	1	109	105461-01	PISTON ROD O'RING	0	0	1
46	L-3017	SMALL ECCENTRIC	1	1	1	110	105449-01	PISTON	0	0	1
48	A-4333	#808 WOODRUFF KEY	1	1	1	111	105462-01	BACK-UP RING	0	0	2
49	L-3002	COVER PLATE GASKET	1	1	1	112	A-2849	O'RING	0	0	1
50	L-3001	COVER PLATE	1	1	1	113	105463-01	CYLINDER	0	0	1
51	91017	3/8 X 1 3/4 SQ HD BOLT	1	1	1	114	105500-01	BODY O'RING	0	0	1
52	114763-01	PUMP SETTING SCALE	1	1	1	115	93010	5/16 FLAT WASHER	0	0	2
53	H-30	GREASE FITTING	2	2	2	116	105501-01	STRAP	0	0	2
54	90532	5/16 X 3/8 SET SCREW	3	3	3	117	92020	5/16 HEX NUT	0	0	2
55	105933-91	STROKE SETTING ARM	1	1	1	118	93023	5/16 LOCK WASHER	0	0	4
56	A-368	SETTING SCALE SCREW	3	3	3	119	90635	HEX HEAD BOLT	0	0	1
57	105932-91	STROKE SETTING FLANGE	1	1	1	120	L-3035	GASKET	2	2	
58	L-1021	OIL SEAL	1	1	1	121	A-3097	3/8 LOCK NUT	1	1	
59	L-1007-A	CRANKSHAFT BEARING	1	1	1	122	114705-91	ROD THROW-OUT ASSEMBLY	0	0	1
60	L-1022	CRANKSHAFT O'RING	1	1	1	123	L-4025	SUPPORT HANDLE	1	0	0
						124	111943-01	O-RING	1	1	1

**NOTE: NO. 75-A, 111943-01 O'RING IS IN 111935-01 CROSSHEAD GUIDE, NOT SHOWN ON PUMP DRAWING.

ALL DESIGNS SUBJECT TO CHANGE WITHOUT NOTICE

Dultmeier Sales 1-800-228-9666 for Omaha, NE or 1-800-553-6975 for Davenport, IA

Model L-4400 Series Metering Pump

Parts for L-4400, L-4405, L-4409



REF. NO.	PART NO.	ITEM DESCRIPTION	L-4400 SERIES			REF. NO.	PART NO.	ITEM DESCRIPTION	L-4400 SERIES		
			L-4400 QTY	L-4405 QTY	L-4409 QTY				L-4400 QTY	L-4405 QTY	L-4409 QTY
1	92037	5/8" JAM NUT	2	0	2	61	L-1020	SETTING ARM KEY	2	3	2
2	L-3065	THROW-OUT YOKE	1	1	1	62	L-4012	CRANKSHAFT	1	0	1
3	92014	#10 SQUARE NUT	1	0	0	64	A-261	SQUARE KEY	2	0	2
4	A-697	WASHER	2	0	0	65	L-3056	STROKE LOCATING SLV.	1	1	1
5	A-2762	CAM ROLLER	2	0	0	66	L-3004	ECCENTRIC PIN	1	1	1
6	A-2763	ROLL PIN	1	0	0	67	113588-01	CONNECTOR ROD BUSHING	1	1	1
7	90953	2 1/4 RD HD SCREW	1	0	0	68	93024	3/8 LOCK WASHER	4	4	4
8	L-4011	THROW-OUT ROD	1	0	0	69	93011	3/8 FLAT WASHER	4	4	4
9	90655	3/8 X 1 1/2 HEX BOLT	7	4	5	70	A-147	LEG MOUNTING PAD	4	4	4
10	F-48	THROW-OUT LEVER SPRING	1	0	0	71	C-431-B	PLUG	3	3	3
11	94010	5/32 X 1 COTTER PIN	1	0	0	72	105895-01	CROSSHEAD PIN	1	1	1
12	L-3064	THROW-OUT LEVER	1	0	0	73	105900-91	PISTON ROD ASSEMBLY	1	1	1
13	92024	3/8 HEX NUT	10	8	8	74	L-3052	CROSSHEAD GDE. GASKET	1	1	1
14	A-2758-A	PAWL	1	0	0	75	111935-01	CROSSHEAD GUIDE	1	1	1
15	A-2757-A	THROW-OUT CAM	1	0	0	76	L-1109	ROD VEE PACKING SET	2	2	2
16	L-3007	THROW-OUT BRACKET	1	0	0	77	L-1041	WASHER	3	3	3
17	114165-01	R H TORSION SPRING	1	0	0	78	L-1063	PACKING SPRING	2	2	2
18	A-50	HANDWHEEL	1	0	1	79	L-3074	STUFFING BOX GASKET	1	1	1
19	HA-57	SAFETY CLUTCH SPRING	1	0	0	80	L-3049	OUTBOARD STUFFING BOX	1	1	1
19A	108907-01	SAFETY CLUTCH SPRING	0	0	1	81	L-1042	RETAINING RING	1	1	1
20	A-260	CLUTCH	1	0	0	82	L-1031-2	STUFFING BOX INSERT	1	1	1
20A	108905-91	CLUTCH	0	0	1	83	L-3055	INBOARD CYLINDER	1	1	1
21	H-28	GREASE FITTING	5	2	5	84	112816-91	PISTON PLUNGER ASSY	1	1	1
22	L-4249	DRIVE PIN	1	0	1	85	L-1047	SELF-LOCKING NUT	1	1	1
23	105373-01	CLUTCH COLLAR	1	0	1	86	L-1044	FLANGE PACKING WASHER	1	1	1
24	A-116	OILITE BUSHING	2	0	2	87	L-1098	PACKING ADJ. GASKET	2	2	2
25	L-4008-A	CARRIER	1	0	0	88	L-1045-V	FLANGE PLUNGER PACKING	2	2	2
	108910-91	CARRIER	0	0	1	89	92028	HEX NUT	2	2	2
26	L-4007	18T SPROCKET (OR)	1	0	1	90	L-3115	1/2 PLASTIC PLUG	1	1	1
	L-4006	16T SPROCKET	1	0	1	91	L-4017-A	SUCTION MANIFOLD	1	1	1
26A	L-4005	18T SPROCKET	1	0	0	92	L-3031	VALVE O'RING	4	4	4
	108909-91	18T SPROCKET	0	0	1	93	106489-92	SUCTION VALVE ASS'SY	2	2	2
27	90993	1/4 X 1 1/2 BOLT	3	0	3	94	L-3045	OUTBOARD CYLINDER	1	1	1
28	90637	5/16 X 1 HEX BOLT	12	12	12	95	90669	3/8 X 5 1/2 HEX BOLT	4	4	4
29	L-4009	RETAINING COLLAR	1	0	1	96	106490-92	DISCHARGE VALVE ASS'Y	2	2	2
30	110155-01	WASHER	1	1	1	97	L-4016	DISCHARGE MANIFOLD	1	1	1
31	L-1018	OIL SEAL	1	1	1	98	A-3223	PLASTIC PLUG	1	1	1
32	L-3023	BEARING HOUSING	1	1	1	99	90681	7/16 X 7 1/2 HEX BOLT	2	2	2
33	L-3021	BEARING H'SING GASKET	1	1	1	100	106532-01	SPROCKET	0	1	0
35	L-3019	CRANKSHAFT BEARING	1	1	1	101	90986	3/8 X 5/8 SCREW	0	4	0
36	106537-01	NAME PLATE	1	1	1	102	110147-01	SPACER	0	1	0
37	90634	5/16 X 1/2 HEX BOLT	1	2	1	103	103453-02	CRANKSHAFT	0	1	0
38	L-4014	SPRING ANCHOR	1	0	0	104	93016	SAE FLAT WASHER	0	0	1
39	90636	5/16 X 3/4 HEX BOLT	1	0	1	105	105448-01	BACK UP RING	0	0	1
40	L-4013	CRANKCASE ASSEMBLY	1	1	1	106	A-3776	O'RING	0	0	1
41	S-350	VENT PLUG	1	1	1	107	105447-01	BODY	0	0	1
43	L-3020	CRANKSHAFT DISC	1	1	1	108	105452-01	BACK-UP RING	0	0	1
44	L-3026-A	CONNECTING ROD	1	1	1	109	105461-01	PISTON ROD O'RING	0	0	1
45	L-3016	LARGE ECCENTRIC	1	1	1	110	105449-01	PISTON	0	0	1
46	L-3017	SMALL ECCENTRIC	1	1	1	111	105462-01	BACK-UP RING	0	0	2
48	A-4333	#808 WOODRUFF KEY	1	1	1	112	A-2849	O'RING	0	0	1
49	L-3002	COVER PLATE GASKET	1	1	1	113	105463-01	CYLINDER	0	0	1
50	L-3001	COVER PLATE	1	1	1	114	105500-01	BODY O'RING	0	0	1
51	91017	3/8 X 1 3/4 SQ HD BOLT	1	1	1	115	93010	5/16 FLAT WASHER	0	0	2
52	114763-01	PUMP SETTING SCALE	1	1	1	116	105501-01	STRAP	0	0	2
53	H-30	GREASE FITTING	2	2	2	117	92020	5/16 HEX NUT	0	0	2
54	90532	5/16 X 3/8 SET SCREW	3	3	3	118	93023	5/16 LOCK WASHER	0	0	4
55	105933-91	STROKE SETTING ARM	1	1	1	119	90635	HEX HEAD BOLT	0	0	1
56	A-368	SETTING SCALE SCREW	3	3	3	120	L-3035	GASKET	1	1	1
57	105932-91	STROKE SETTING FLANGE	1	1	1	121	A-3097	3/8 LOCK NUT	1	1	1
58	L-1021	OIL SEAL	1	1	1	122	114705-91	ROD THROW-OUT ASSEMBLY	0	0	1
59	L-1007-A	CRANKSHAFT BEARING	1	1	1	123	L-4025	SUPPORT HANDLE	1	0	0
60	L-1022	CRANKSHAFT O'RING	1	1	1	124	111943-01	O-RING	1	1	1