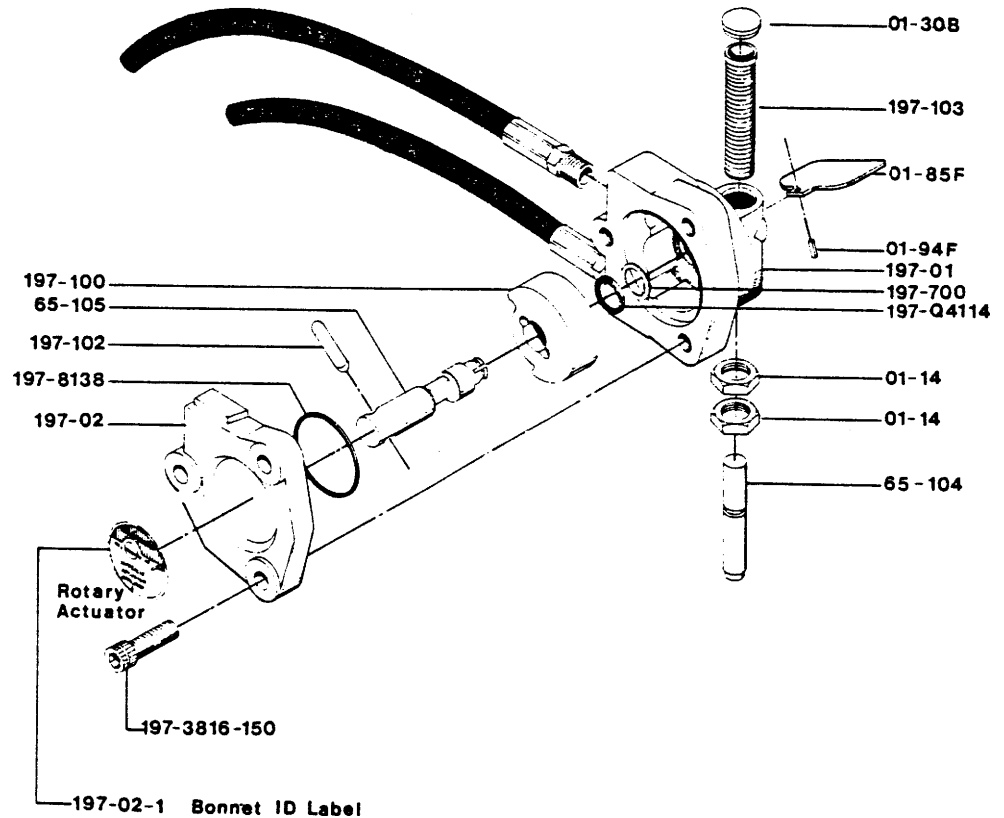


R6572 Rotary Actuator

Continental

The R-6572 is easily installed on any 6000, 6500, or 7200 series Meter Matic. Remove rope pull or handle assembly and install the adjusting screw of the actuator in the existing bonnet. When installing the actuator unit, the adjusting screw should be threaded into the bonnet until the cam rod and shut-off stem make contact. Then back off 1/8 of a turn. The linkage is now in proper adjustment and should be locked down securely.



Part No.	Description	Part No.	
01-14	Lock Nut	197-102	Rotor Retaining Pin
01-30-B	Cam Housing Cap	197-103	Adjusting Screw
01-85-F	Indicator Flag	65-104	Cam Rod
01-94-F	Flag Lock Pin	197-700	Cap Seal Back Up
197-01	Rotary Actuator Body	197 3816-150	Body Screw
197-02	Rotary Actuator Bonnet	197-8138	Body Seal O-Ring
197-100	Rotor	197 Q4114	Cam Seal Quad Ring
65-105	Cam for Meter Matic	197 02-1	Bonnet ID Label