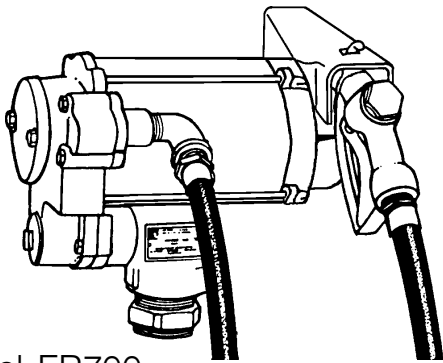


FILL-RITE

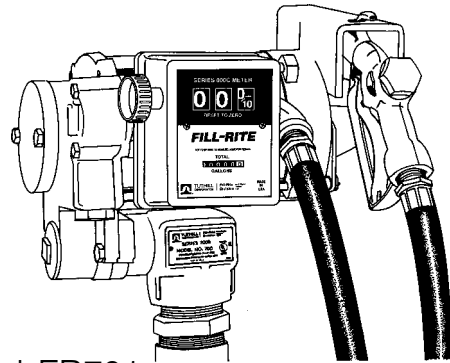
Owner's Operation & Safety Manual

SERIES 700B PUMP

For models: FR700, FR701



Model FR700



Model FR701

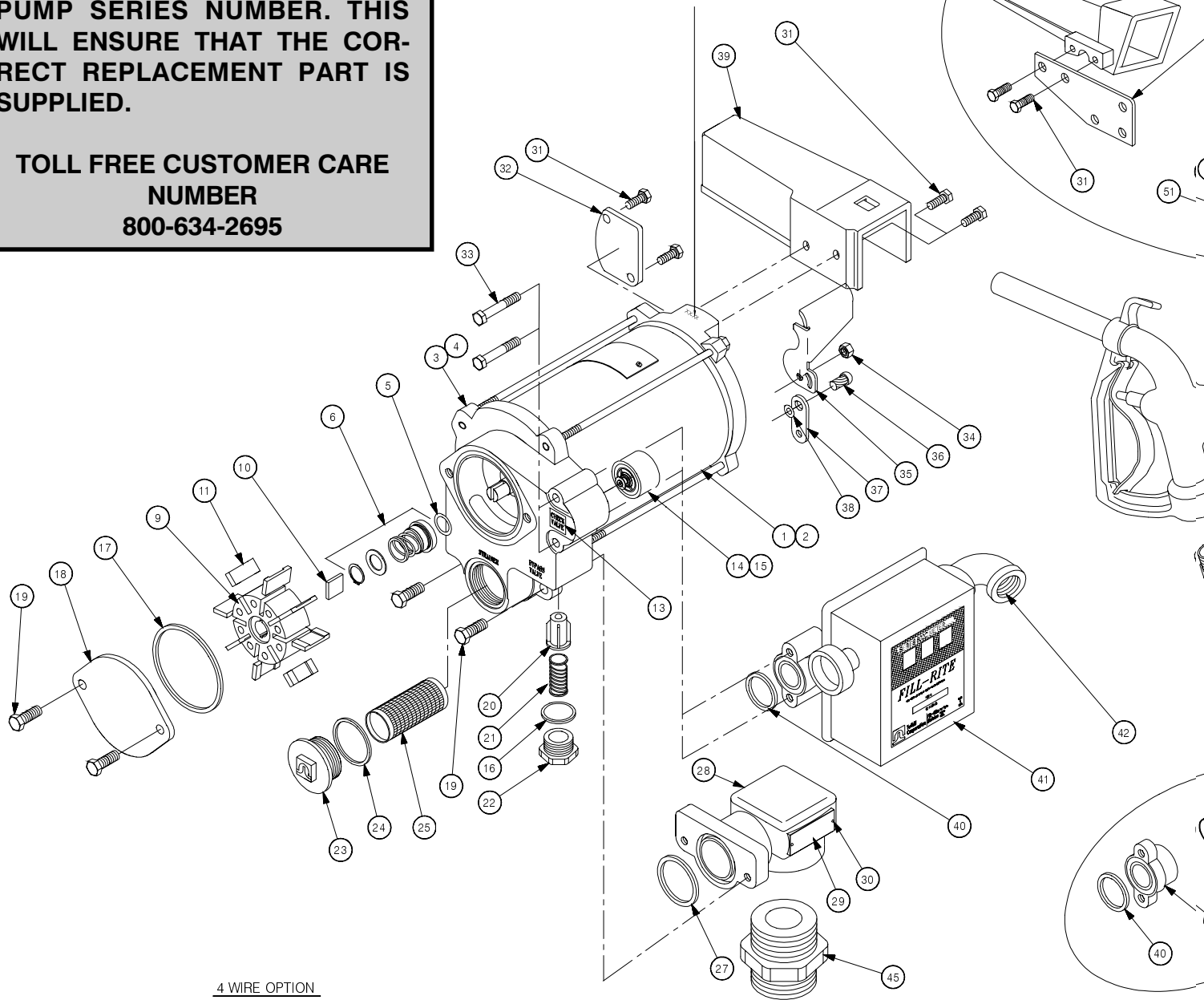
OUTSTANDING FEATURES

- Up to 20 GPM / 76 LPM
- UL, CUL, CSA listed pump and motor
- Full 1/3 HP 115 VAC-60Hz motor, optional 230 VAC-50/60Hz
- Thermal overload protector
- Heavy duty switch
- Integral check valve
- Built-in bypass valve

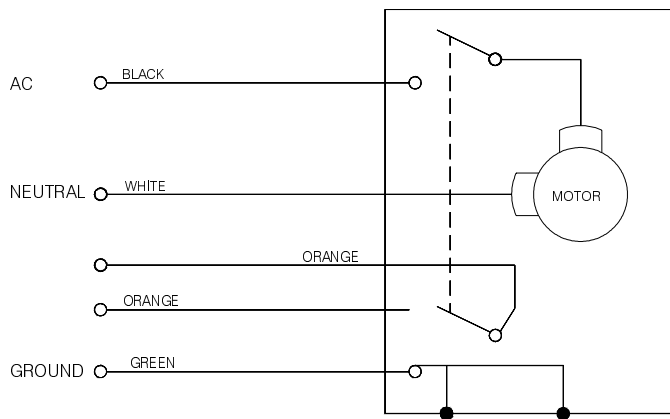
WHEN ORDERING REPAIR PARTS, BE SURE TO GIVE REPLACEMENT PART NUMBER, DATE OF MANUFACTURE AND PUMP SERIES NUMBER. THIS WILL ENSURE THAT THE CORRECT REPLACEMENT PART IS SUPPLIED.

**TOLL FREE CUSTOMER CARE NUMBER
800-634-2695**

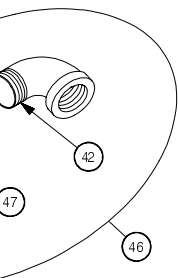
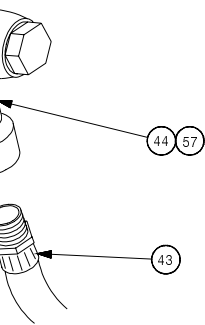
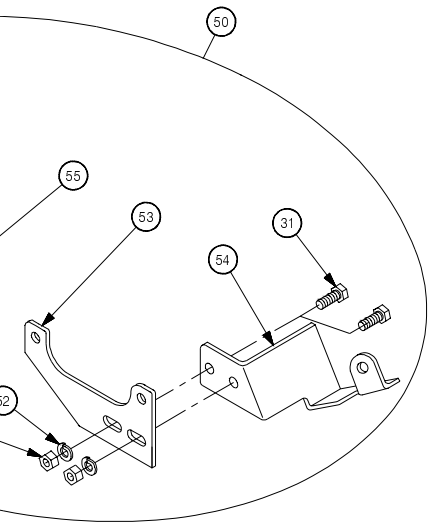
DATE OF MANUFACTURE
(Month-Year)



4 WIRE OPTION



ACCESSORIES	
TH13	Pedestal Kit
712KTTF9114	Universal Nozzle Boot



MODELS WITH AUTOMATIC NOZZLE RETAINER

ITM. NO.	PART NO.	DESCRIPTION	QTY
50	700KTF8598	Auto-Nozzle Retainer Kit (includes items 31, 51, 52, 54, 55, 56)	Opt.
51	704F3680	5/16-18 Hex Nut	2
52	704F3690	5/16 Lockwasher	2
53	700F8518	Retainer Bracket	1
54	300F7759	Nozzle Retainer	1
55	300F8520	Cover Bracket	1
56	300F7764	Nozzle Cover	1

Teflon® is a registered trademark of DuPont.

700B SERIES PUMP PARTS LIST

ITM. NO.	PART NO.	DESCRIPTION	MATERIAL OF CONSTRUCTION	QTY.
1	700F2683	Motor - 115V, 60 Hz	Steel Motor Shaft	1
2	700F2697	Motor - 220V, 50/60 Hz	Steel Motor Shaft	Opt.
	700F3143 1200F3170	Line Switch (Before 7/99) Line Switch (After 7/99) (Included w/items 1 & 2)		1
	700F3149	Switch Shaft Assy. (Included w/items 1 & 2)		1
3	700F2686	Pump Housing (Included w/item 2)	Cast Iron	1
5	700F2754	Fiber Seal Slinger		1
6	700KTF2687	Seal Assembly	304 Stainless Steel, Allite, Ceramic, and Fluorocarbon	1
9	700F2654	Rotor	Iron/Bronze (80%/20%)	1
10	700F3131	Rotor Key	L-589 Spauldite	1
11	700F2716	Vane - Carbon Machined	Carbon	8
13	700F2680	Check Valve Label		1
14	700F2661	Check Valve Assy.	Glass Filled Polyester, Fluorocarbon, Zinc Plated Steel, 302 Stainless Steel, Brass, Steel, and Teflon®	1
15	700F2679	Dummy Check Valve		Opt.
16	1200F6455	O-Ring Gasket (-121)	Buna-N	1
17	300F7743	O-Ring Gasket (-236)	Buna-N	1
18	700G7063	Rotor Cover	Steel	1
19	300G7296	3/8-16 x .75 HHCS		4
20	700F2762	Poppet	Glass Filled Polyester and Buna-N	1
21	700F2775	Bypass Spring	302 Stainless Steel	1
22	1200F6464	Bypass Cap	Steel	1
23	800F4360	Strainer Cover	Cast Iron	1
24	800F4380	O-Ring Gasket (-131)	Buna-N	1
25	700F2665	Strainer - Standard Mesh	304 Stainless Steel, Tin Plated Steel	1
27	300F7744	O-Ring Gasket (-224)	Buna-N	1
28	700F2652	Inlet Housing	Cast Iron	1
29	-----	Pump Nameplate		1
30	700G1906	3/32 Rivet		2
31	300F7751	5/16-18 x .50 HHCS		4
32	700G7064	Junction Box Cover		1
33	304F7717	5/16-18 x 2 1/4 HHCS		2
34	700F2950	5/16-18 Lock Nut		1
35	700F6680	Switch Lever		1
36	700F1950	#14 x 5/8 Drive Screw		1
37	700F6814	Locking Link		1
38	5200F1440	1/4 Spring Washer		1
39	700F6688	Nozzle Cover		1
40	700F2800	O-Ring Gasket (-218)	Buna-N	1
41	807C	800 Meter (Model FR701)		1
	807CL	800 Liter Meter (Model FR701L)		Opt.
42	702F3400	Street El (Model FR701)	Galvanized Steel	1
43	700F3135	12' UL Listed Hose		1
44	700F3136	3/4" No-lead Nozzle		1
	700F3144	Automatic Nozzle No-lead Spout (Not Shown)		Opt.
	4200F9111	Automatic Nozzle Spout Hook (Not Shown)		Opt.
45	700F2170	Tank Adapter		1
	700KTF2659	700B Repair Parts Kit (Includes Items 9, 10, 11, 16, 20, 24, 27, 40 & 700KTF2687 Seal Kit)		
	700KTF2687	Seal Kit (Includes Items 6 & F2005 Seal Tool)		
MODELS WITHOUT 800 METER (Replaces items 41 & 42)				
46	700F3127	Discharge Assy.		Opt.
47	700F3020	Outlet Fitting (Model 700)	Aluminum	1
40	700F2800	O-Ring Gasket (-218)	Buna-N	1
42	702F3400	Street El	Galvanized Steel	1