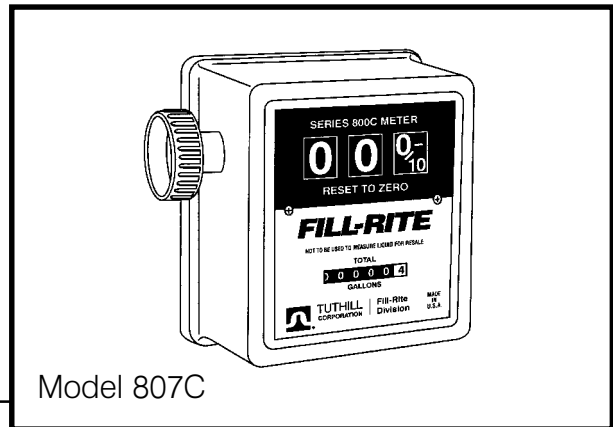
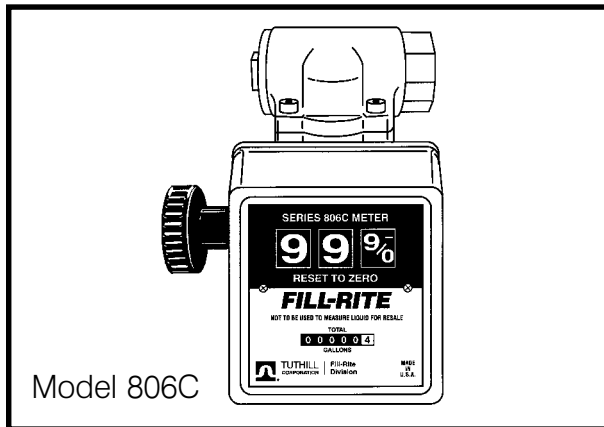


FILL-RITE

Owner's Operation & Safety Manual

SERIES 800C METER

For models 806C, 807C



OUTSTANDING FEATURES

- 5 to 20 GPM / 19 to 76 LPM flow rate
- $\pm 1\%$ accuracy
- 3/4" or 1" NPT flow ports
- Large, easy to read numbers
- Quick reset knob
- Totalizer
- UL/CSA Listed

- If indicated amount does not match known volume, insure pump is off and pressure relieved, then remove seal screw (item 23) and turn calibration screw (item 21) counterclockwise to reduce indicated amount or clockwise to increase the amount. A full turn will change the indicated amount by approximately 0.1 Gal. (0.4L). Reinstall seal screw
- Repeat step 2 until calibration is acceptable.

OPERATING INSTRUCTIONS

For accurate measurement, meter and piping must always be filled with liquid and free of air. Meter should be calibrated per instructions in this manual prior to its use.

- Reset meter to "0".
- Meter is ready for use. Do not exceed 50PSI line pressure.

MAINTENANCE

Meter should operate maintenance free. However, certain liquids can dry out while in the meter housing, causing meter to stop. If this happens, meter should be thoroughly cleaned (see instructions below).

Cleaning Instructions

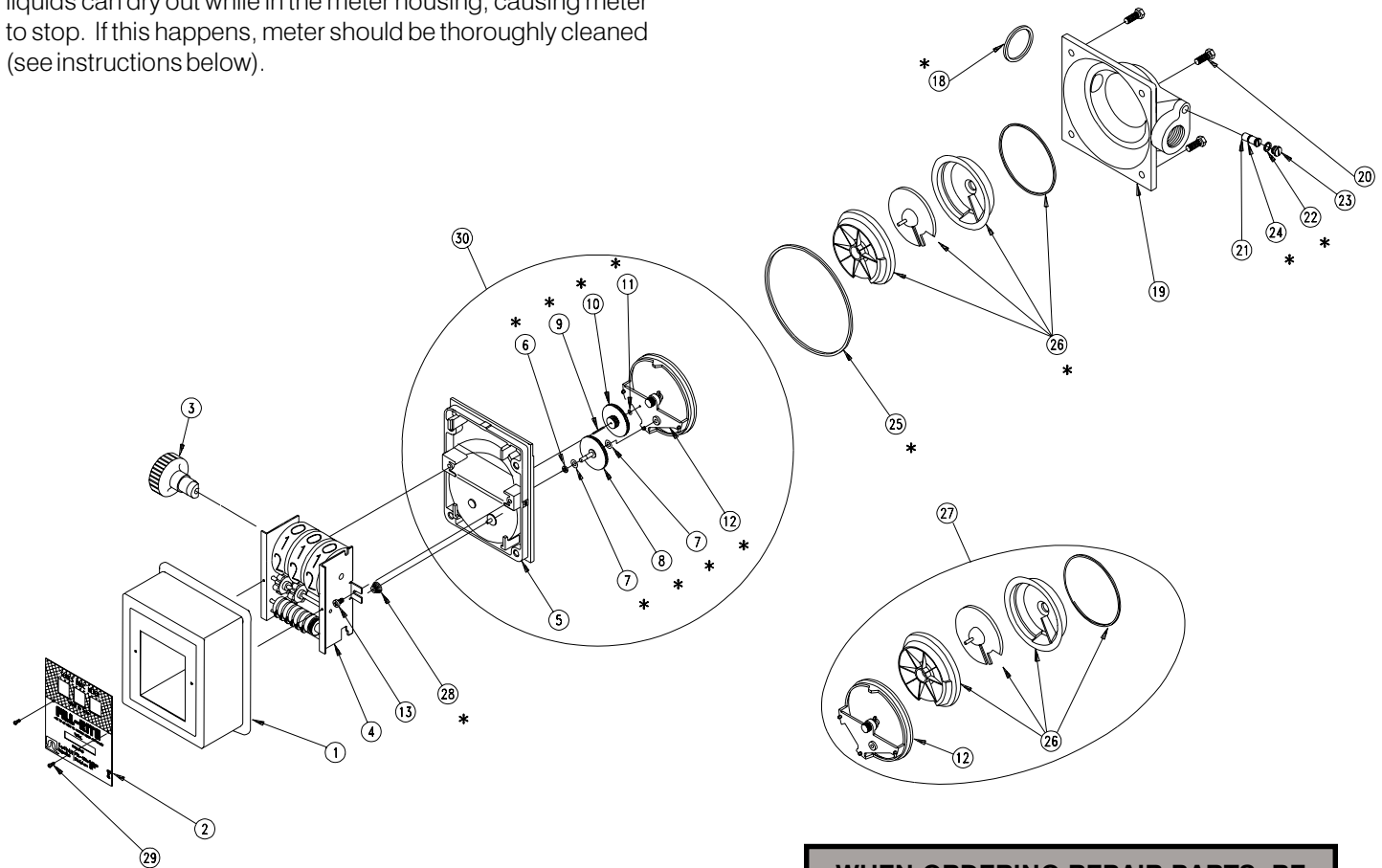
Run a flushing fluid through meter. For a more thorough cleaning, disassemble meter per "ASSEMBLY/DISASSEMBLY" section, "Meter Chamber Assembly" subsection. Rinse all meter components. Recalibrate meter following calibration instructions above.

Storage

If meter is to be stored for a period of time, clean thoroughly. This will help protect meter from damage.

REPAIR

Meters needing repair should be taken to an authorized repair shop or returned to factory for service. Meters must be thoroughly triple-rinsed before being taken in for repair.



WHEN ORDERING REPAIR PARTS, BE SURE TO GIVE REPLACEMENT PART NUMBER, DATE OF MANUFACTURE AND METER SERIES NUMBER. THIS WILL ENSURE THAT THE CORRECT REPLACEMENT PART IS SUPPLIED.

**TOLL FREE CUSTOMER SERVICE
NUMBER
800 634 2695**

*These parts are in the 800C Series Repair Parts Kit..

800C METER PARTS LIST

ITM. NO.	PART NO.	DESCRIPTION	MATERIAL OF CONSTRUCTION	QTY.
1	800F4132	Counter Cover		1
2	800G0208	Counter Face, U.S. Gallon		1
	800G0241	Counter Face, Liter		Opt.
3	800F4261	Knob Assembly		1
4	800F4080	Counter - U.S. Gallon		1
	800F4081	Counter - Liter		Opt.
5	800G2246	Meter Cover	Aluminum	1
	800G2247	Meter Cover, Nickel Plated		Opt.
	800G2248	Meter Cover, Teflon Coated		Opt.
6	800F4191	O-Ring (5-106)	Fluorocarbon	1
	800F4033	O-Ring (5-106)	EPDM	Opt.
7	800F3980	Washer	Stainless Steel	2
8	800F3845	Drive Gear (70T) - U.S. Gallon	Ryton	1
	800F3846	Drive Gear (84T) - Liter	Ryton	Opt.
	800F4185	Drive Gear (73T) - Imperial Gallon	Ryton	Opt.
9	800F3820	Shaft, Cluster Gear	Stainless Steel	1
10	800F3841	Cluster Gear (22T/67T) - U.S. Gallon	Ryton	1
	800F3843	Cluster Gear (10T/67T) - Liter	Ryton	Opt.
	800F3541	Cluster Gear (19T/67T) - Imperial Gallon	Ryton	Opt.
11	800F3830	Washer	Stainless Steel	1
12	800G2250	Gear Frame Assembly	Ryton and Stainless Steel	1
13	900F4007	#8-32 x 5/16 PHMS ACR II		2
18	700F2800	O-Ring (-218), Buna-N (For 800A, 700A/B)		Opt.
	700F2801	O-Ring (-218), Fluorocarbon (For 800A, 700A/B)		Opt.
	800G2601	O-Ring (-218), EPDM (For 800A, 700A/B)		Opt.
19	800G2236	3/4 Inlet - 3/4 Outlet Housing	Aluminum	1
	800G2237	3/4 Inlet - 3/4 Outlet Hsg., Nickel Pltd.		Opt.
	800G2238	3/4 Inlet - 3/4 Outlet Hsg., Teflon Ctd.		Opt.
	800G2242	1 Inlet - 1 Outlet U.S. Housing		Opt.
	800G2243	1 Inlet - 1 Outlet U.S. Hsg., Nickel Pltd.		Opt.
	800G2244	1 Inlet - 1 Outlet U.S. Hsg., Teflon Ctd.		Opt.
	800G2255	1 Inlet - 1 Outlet BSPT Housing		Opt.
	800G2256	1 Inlet - 1 Outlet BSPT Hsg., Nickel Pltd.		Opt.
	800G2257	1 Inlet - 1 Outlet BSPT Hsg., Teflon Ctd.		Opt.
20	700F2810	5/16-18 x 7/8 HHCS		4
21	800F4463	Calibration Screw (Includes Item 24)	Stainless Steel	1
22	800F4449	O-Ring (-012)	Fluorocarbon	1
	800F3389	O-Ring (-012)	EPDM	Opt.
23	800F4440	Seal Screw	Stainless Steel	1
24	800F4036	O-Ring (-008) (Included with Item 21)	Fluorocarbon	1
	800F4034	O-Ring (-008), EPDM		Opt.
25	800F4010	O-Ring (-156), Buna-N		1
	800F4011	O-Ring (-156), Fluorocarbon		Opt.
	800F4032	O-Ring (-156), EPDM		Opt.
26	800G2262	Meter Chamber Assembly - Buna-N	Ryton, Stainless Steel, Buna-N	1
	800G2599	Meter Chamber Assembly - Fluorocarbon	Ryton, Stainless Steel, Fluorocarbon	Opt.
	800G2600	Meter Chamber Assembly - EPDM	Ryton, Stainless Steel, EPDM	Opt.
27	800G2531	Meter Chamber Assembly, Buna-N (Includes Items 12 & 26)		1
28	800F3959	Pinion Bevel		
29	800F2221	#4-6 x 3/8 PHMS Type AB		2
30	800G2532	Cover Assembly - U.S. Gallon		1
	800G2533	Cover Assy. - U.S. Gallon - Nickel Pltd.		Opt.
	800G2534	Cover Assy. - U.S. Gallon - Teflon Ctd.		Opt.
	800G2535	Cover Assembly - Liter		Opt.
	800G2536	Cover Assembly - Liter, Nickel Plated		Opt.
	800G2537	Cover Assembly - Liter, Teflon Coated		Opt.
	800G2544	Cover Assembly - Imperial Gallon		Opt.
	800G2765	Cover Assy. - U.S. with EPDM Seal		Opt.
	800G2778	Cover Assy. - U.S. Nickel with EPDM Seal		Opt.
	800G2900	Cover Assembly - Liter with EPDM Seal		Opt.