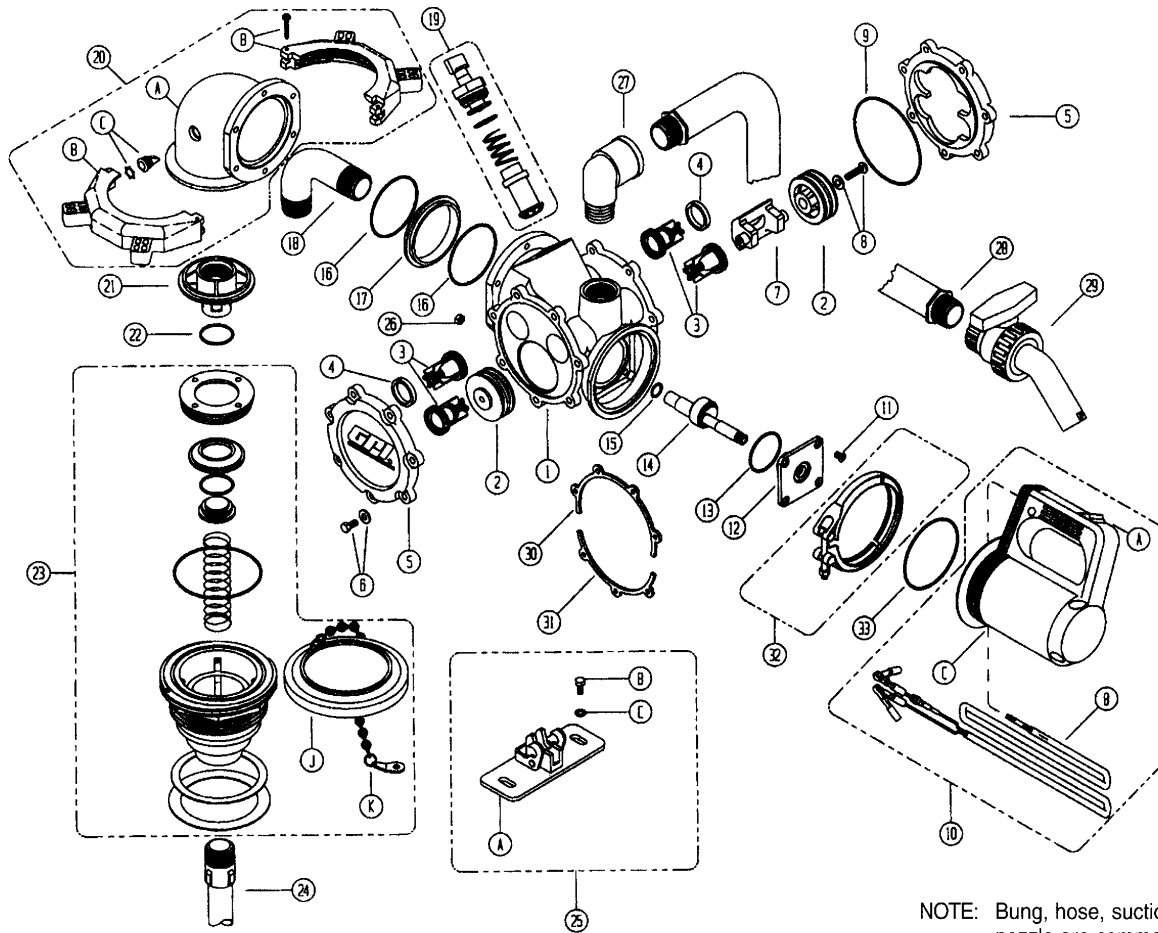


# Herbicide Series VP12H/H High Viscosity Pump



NOTE: Bung, hose, suction pipe, and nozzle are common accessories.

Item No.	Part No.	Description	No. Req'd.
1	115540-3	Housing Assembly .....	1
2	115523-1	Piston Assembly Kit .....	1
3	115021-1	Valve Cage Assembly .....	4
4	115099-1	Spacer .....	2
5	115003-3	End Cover .....	2
6	904003-49	Screw and Washer, Sems, 1/4-20 x 1 in. ...	20
7	115031-1	Piston Rod .....	1
8	904003-9	Hex Cap Screw, 1/4-20 x 7/8 in. ....	2
8	904003-11	Washer .....	2
9	901001-92	Seal, End Cover or (Kit <b>A</b> ) .....	2
10	115008-1	Motor Assembly .....	1
10-A	902002-91	Switch .....	1
10-B	115016-1	Cord Assembly (20 ft. with clips and fuse) ..	1
10-C1	115525-2	12-volt DC Motor Assembly Kit .....	1
10-C2	906001-71	Gearbox .....	1
10-C3	115526-1	Motor Cover Kit .....	1
11	904003-7	Screw, 1/4-20 x 1/2 in. ....	4
12	115522-1	Bearing Mount Assembly Kit .....	1
13	901001-90	Seal, Bearing Mount .....	1
14	115009-1	Camshaft Assembly .....	1
14-A	906001-87	Bearing .....	1
14-B	904003-10	Snap Ring .....	1
15	904003-5	Washer, Thrust .....	1
16	901001-93	Seal, Lower Cover or (Kit <b>A</b> ) .....	2
17	115512-3	Seal Plate .....	1

Item No.	Part No.	Description	No. Req'd.
18	115556-1	Tube .....	1
19	115546-1	Bypass Valve Assembly Kit .....	1
20	115510-3	Elbow Assembly .....	1
20-A	115511-1	Elbow .....	1
20-B	115542-3	Spin Collar Kit .....	1
20-C	115520-1	Valve Kit (2 ea. Valve and Ring) .....	1
21	115512-1	Seal Plate, Inlet .....	1
22	901002-12	Seal, O-Ring or (Kit <b>A</b> ) .....	1
23	115500-4	Bung Adapter Assembly .....	1
23-J	115505-4	Cover .....	1
23-K1	904003-59	Washer, Retainer .....	1
23-K2	904003-55	Ring .....	2
23-K3	115507-2	Chain .....	1
24	110100-2	Adjustable Suction Pipe .....	1
25-A	115531-1	Bracket Assembly .....	1
25-B	904003-33	Cap Screw, 1/4-20 x 1/2 in. ....	2
25-C	904001-22	Lock Washer .....	2
26	904003-1	Nut, 1/4-20 .....	6
27	117200-1	Elbow, Street (90 degree) .....	1
28	110094-2	EPDM Hose, 1 in. x 12 ft. ....	1
29	906001-97	Nozzle, Ball Valve .....	1
30	115037-1	Back-up Ring (Top) .....	2
31	115037-2	Back-up Ring (Bottom) .....	2
32	115548-1	V-Clamp Kit .....	1
33	901001-91	Seal, Motor Adapter .....	1

## Kits and Accessories

- A** 115519-1 Wet Seal Kit (Pump) includes the required number of the following items: end cover seal, lower cover, seal, bypass seal and O-Ring seal.
- B** 115521-1 Bung Adapter Seal Kit includes disc assembly, bung O-Ring and seal.

Dultmeier Sales 1-800-228-9666 for Omaha, NE or 1-800-553-6975 for Davenport, IA