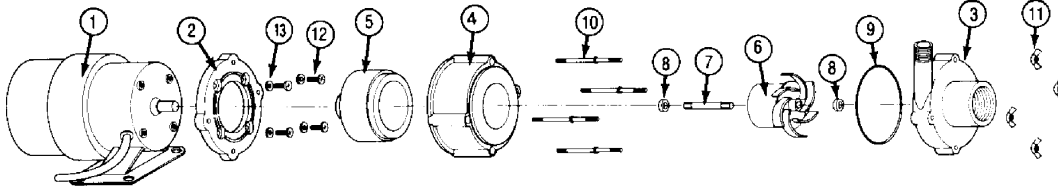


Models 1-MD, 2-MD & 3-MD



Note: Motor configuration may vary from model to model.

REPLACEMENT PARTS LIST												
ITEM NO.	PART NO.	DESCRIPTION	MODEL & CATALOG NO.									
			1-MD			2-MD				3-MD		
			589002	589012	589098	580002	580012	580038	580098	581002	581012	581098
*1	977108	MOTOR, 115 VOLT	1									
*1	977452	MOTOR, 115 VOLT				1						
*1	977853	MOTOR, 220/240 VOLT		1			1					
*1	977862	MOTOR, 230V, CONDUIT BOX						1				
1	977402	MOTOR, 115 VOLT								1		
*1	977915	MOTOR, 220/240 VOLT									1	
2	180042	ADAPTOR/BASE							1			1
2	180037	ADAPTOR/BRACKET						1				
2	180031	ADAPTOR/BRACKET	1	1	1	1	1			1	1	
3	186021	VOLUTE	1	1	1							
3	180079	VOLUTE				1	1	1	1	1	1	1
7	180004	HOUSING, MAGNET	1	1	1	1	1	1	1	1	1	1
5	180602	DRIVE MAGNET ASSEMBLY	1	1	1	1	1	1	1	1	1	1
6	181165	IMPELLER/MAGNET ASSEMBLY	1	1	1	1	1	1	1	1	1	1
7	180058	SHAFT	1	1	1	1	1	1	1	1	1	1
8	921067	WASHER, THRUST	2	2	2	2	2	2	2	2	2	2
9	924007	O-RING	1	1	1	1	1	1	1	1	1	1
10	911403	STUD, COLLARED	4	4	4	4	4	4	4	4	4	4
11	920003	NUT, WING, #8-32	4	4	4	4	4	4	4	4	4	4
12	920006	NUT, HEX, #8-32	4							4	4	
12	901424	SCREW, MACHINE, #8-32 X 1/2"		4		4	4	4				
13	921075	WASHER, #8, FLAT	4	4		4	4	4		4	4	

\* indicates motors with sleeve bearings.