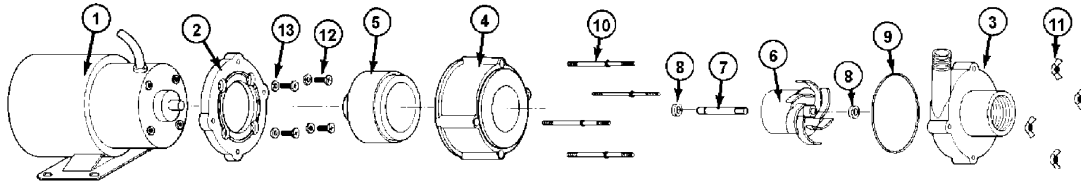


Models 2-MD-SC, 2-MD-HC & 2-MDIX-SC



Note: Motor configuration may vary from model to model.
 Remarque : la configuration du moteur peut varier selon le modèle.
 Nota: La configuración del motor puede variar de modelo a modelo.

*PARTS LIST				MODEL & CATALOG NO.										
ITEM NO.	PART NO.	DESCRIPTION	QTY.	580503 2-MD-SC	580514 2-MD-SC	580523 2-MD-SC	580543 2-MD-SC	580537 2-MD-SC	580603 2-MD-HC	580614 2-MD-HC	580637 2-MD-HC	580509 2-MDIX-SC	580513 2-MD-SC	580613 2-MD-HC
1	977452	Motor, 115 Volt	1	●		●	●		●			●		
1	977862	Motor, 230V, Conduit Box	1		●					●				
1	977853	Motor, 230 Volt	1					●			●			
1	977856	Motor, 230V, Stripped Leads	1						●				●	●
2	180042	Bracket/Adapter	1						●					
2	180037	Bracket/Adapter	1		●			●					●	
2	180048	Bracket/Adapter	1							●	●			●
2	180031	Bracket/Adapter	1	●		●	●		●			●		
3	180079	Volute (Polypro)	1	●	●		●	●					●	
3	182012	Volute (Polypro)	1									●		
3	180080	Volute (Ryton)	1						●	●	●			●
3	186021	Volute (Polypro)	1			●								
4	180004	Housing, Mag. (Polypro)	1	●	●	●	●	●				●	●	
4	180005	Housing, Mag. (Ryton)	1						●	●	●			●
5	180602	Drive, Magnet Assembly	1	●	●	●	●	●	●	●	●	●	●	●
6	180100	Impeller/Driven Magnet	1	●	●	●	●	●					●	
6	180138	Impeller/Driven Magnet	1									●		
6	180110	Impeller/Driven Magnet	1						●	●	●			●
7	180059	Shaft	1	●	●	●	●	●	●	●	●	●	●	●
8	921077	Washer, Thrust	2	●	●	●	●	●	●	●	●	●	●	●
9	924007	O-ring (Buna-N)	1	●	●	●	●	●				●	●	
9	924008	O-ring (Viton)	1						●	●	●			●
10	911403	Stud, Collared	4	●	●	●	●	●	●	●	●	●	●	●
11	920003	Nut, Wing	4	●	●	●	●	●	●	●	●	●	●	●
11	920020	Nut, #8-32	4									●		
12	901424	Screw, #8-32 x 1/2"	4	●	●	●	●	●	●	●	●	●	●	●
13	921075	Washer, Plain, #8	4	●	●	●	●	●	●	●	●	●	●	●