

Models

22080(A) / 22081(A)

Pressure Actuated Unloader

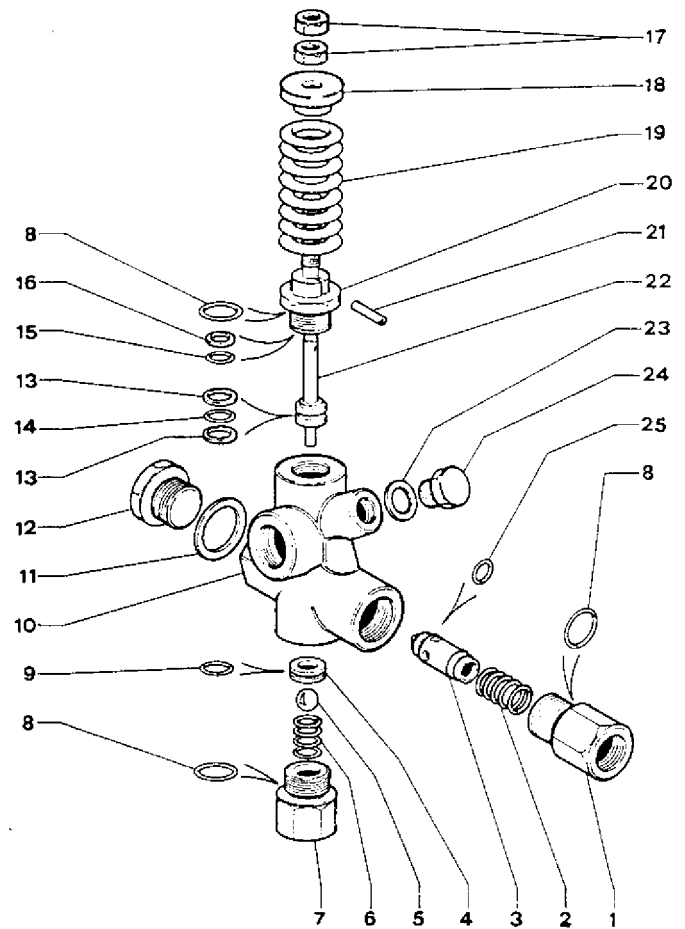
Item	Part#	Description	Quantity
1	8748	Connection, Brass	1
2	8749	Spring	1
3	8750	Piston Housing	1
4	8751	Seat	1
5	8727	Ball	1
6	8752	Spring	1
7	8753	Inlet Fitting (22080/22081)	1
7	8753-0400	Inlet Fitting, 303 S.S. (22080A/22081A)	1
8	8719	O-Ring	3
9	8754	O-Ring	1
10	8755	Valve Housing	1
11	8756	Washer	1
12	8757	Plug	1
13	8758	Back Ring	2
14	8759	O-Ring	1
15	8760	O-Ring	1
16	8761	Back Ring	1
17	8722	Nut	2
18	8762	Spring Guide	1
19	8763	Spring (22081)	1
19	8764	Spring (22080)	1
20	8765	Piston Housing	1
21	8766	Pin	1
22	8767	Piston	1
23	8768	Seal Washer	1
24	8769	Plug	1
25	8770	O-Ring	1

Repair Kit#	Includes Item Numbers:
9173	4,5,8,9,13,14,15,16,25

Operating Conditions

Max. Flow:	21 GPM (79 L/min)
Max Pressure: (22081/22081A)	2200 PSI (152 Bar)
Max Pressure: (22080/22080A)	4100 PSI (283 Bar)
Max. Temperature:	194 ° F (90 ° C)
Inlet Port:	1/2" FNPT
Outlet Port:	1/2" FNPT
By-Pass:	1/2" FNPT

"A" models designate a stainless steel inlet fitting



Note: Always remember to generously lubricate all moving parts with a light weight oil for easy reassembly and to give the moving parts protection when "running in" the unloader.



Giant Industries, Inc.
 900 N. Westwood Ave.
 Toledo, Ohio 43607
 419-531-4600
 FAX 419-531-6836

© Copyright 2006 Giant Industries, Inc.