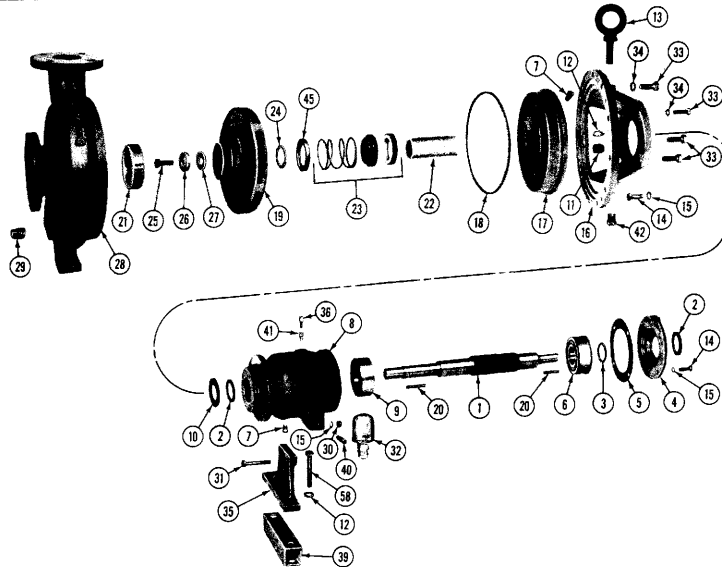


Series 700 Models MP Pumps

<ul style="list-style-type: none"> • Pedestal Mount Centrifugal • Belt or Direct Drive • Mechanical Seal 	<p>Series 700 ANSI 4" x 3" Pipe Size</p>
---	---



IMPORTANT: When ordering parts, specify MODEL and SERIAL NUMBER shown on nameplate.
 N/S means "not shown" in exploded view of parts.

ITEM	PART NO.	DESCRIPTION	QUANTITY REQUIRED PER MODEL			
			ROTATION — All Models Listed Are Right Hand			
			PIPE SIZE - All Models Listed Are 4" x 3"			
			METAL		DUCTILE IRON	
					27160	
					27161	
					27162	
					27163	

HOUSING

	27159	Housing Assembly - Ductile Iron - Inc.	1
28		Housing	1
21	26673	Wear Ring - Steel	1
29	27205	Pipe Plug - 1-1/4"	1
33	27147	Cap Screw s.s. 1/2"	16
34	21254	Lockwasher s.s. 1/2"	12
18	27146	Gasket	1

IMPELLER

	19	27144 Impeller - Ductile Iron - 10.0" (Model 27160)	1
	19	27143 Impeller - Ductile Iron - 11.0" (Model 27161)	1
	19	27141 Impeller - Ductile Iron - 12.0" (Model 27162)	1
	19	27140 Impeller - Ductile Iron - 13.0" (Model 27163)	1
		(Parts Service Kit 27240 required with above impellers)	
25	26674	Seelbolt s.s. 1/2"	1
26	26675	Washer s.s.	1
27	27403	Gasket - Rulon LD	1
20	26796	Square Key s.s. 1/4"	1

Series 700 Models MP Pumps

ITEM	PART NO.	DESCRIPTION	QUANTITY REQUIRED PER MODEL					
			ROTATION — All Models Listed Are Right Hand					
			PIPE SIZE - All Models Listed Are 4" x 3"					
			METAL		DUCTILE IRON			
					27160			
					27161			
					27162			
					27163			

SEAL

45	26972	Spring keeper - s.s.	1
23	26685	Seal Assembly - Self Lubricated	1
23	26752	Severe Service Seal Self Lubricated (Parts Service Kit 27240 required with seals 26685 or 26752)	1
22	26678	Shaft Sleeve - s.s.	1
24	27404	Gasket - Rulon - LD	1
10	26680	Slinger - Neoprene	1

ADAPTOR - Mechanical Seal

17	27155	Adaptor - Ductile Iron	1
34	21254	Lockwasher s.s. 1/2"	2
33	27147	Cap Screw s.s. 1/2"	4
16	27134	Adaptor - Cast Iron	1
7	21267	Pipe Plug s.s. 1/4 NPT	1
42	22656	Pipe Plug s.s. 1/2 NPT	1
14	21274	Cap Screw s.s. 3/8"	4
15	21266	Lockwasher s.s. 3/8"	4
13	26686	Eye Bolt - Steel	1
12	26258	Lockwasher - Steel 5/8"	1
11	22461	Hex Nut - Steel 5/8"	1

BODY

8	26663	Bearing Housing - Cast Iron	1
4	26665	Bearing Retainer - Cast Iron	1
35	26667	Bearing Housing Support - Cast Iron	1
1	26677	Shaft - Steel	1
2	26687	Oil Seal	2
14	21274	Cap Screw s.s. 3/8"	4
15	21266	Lockwasher s.s. 3/8"	6
30	21265	Hex Nut s.s. 3/8"	2
31	21275	Cap Screw s.s. 3/8"	2
5	26691	Gasket	1
20	26796	Square Key s.s. 1/4"	1
7	21267	Pipe Plug s.s. 1/4 NPT	1
41	26692	Reducer bushing 1/8 - 1/4"	1
36	26689	Breather tube	1
40	26693	Pipe nipple 1/4 NPT	1
32	26688	Constant Level oiler	1
6	26630	Ball bearing (includes snap ring)	1
9	26629	Ball bearing	1
3	26690	Snap ring	1
39	27157	Spacer (Bearing housing support)	1
58	27248	Capscrew - steel 5/8"	2
12	26258	Lockwasher - steel 5/8"	2