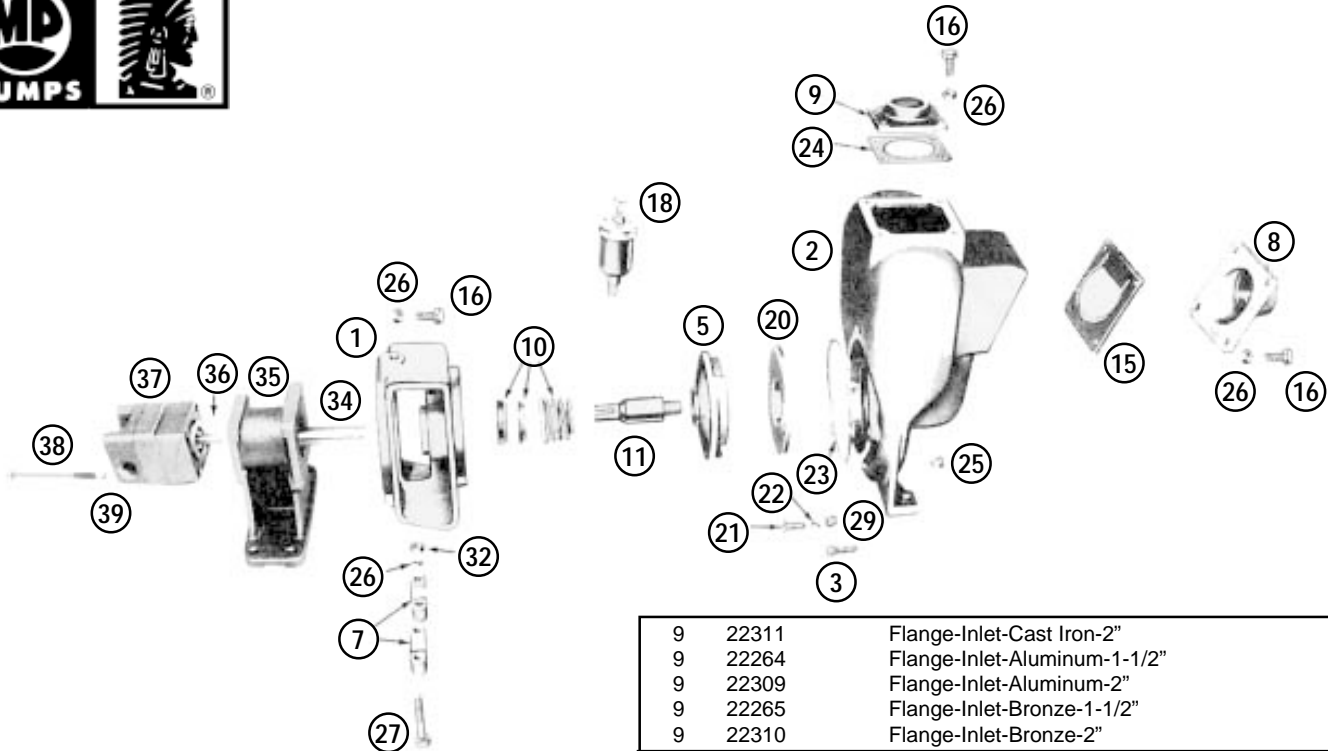


Flomax 5 (1-1/2" x 1-1/2" Pipe Size)
 Flomax 8 (2" x 2" Pipe Size)



Ref. No.	Part No.	Description
ADAPTOR		
1	22247	Adaptor - Cast Iron
1	22245	Adaptor - Aluminum
1	22246	Adaptor - Bronze
1	24865	Adaptor - Cast Iron - Grease Seal
1	24007	Adaptor - Aluminum - Grease Seal
HOUSING		
2	23021	Housing Assy.-Cast Iron-Incl: Housing Assy.
16	21242	Capscrew-Discharge Flange
3	24965	Capscrew S.S. 5/16" x 3/4"
26	21238	Lockwasher
25	21267	Pipe Plug
2	23019	Housing Assy.-Aluminum-Incl: Housing Assy.
16	21242	Capscrew-Discharge Flange
3	24965	Capscrew S.S. 5/16" x 3/4"
26	21238	Lockwasher
25	21267	Pipe Plug
IMPELLER		
5	22293	Impeller-Cast Iron
5	22294	Impeller-S.S.-Optional
5	22291	Impeller-Aluminum
5	22292	Impeller-Bronze
N/S	22655	Impeller Lock Nut (S.S.)
CLAMP		
7	23002	Clamp Assy.-Incl: Clamp
27	21264	Capscrew 5/16" - 18 x 1-3/4"
32	21284	Hex Nut 5/16" - 18
26	21238	Lockwasher 5/16"
FLANGE		
8	22263	Flange-Inlet-Cast Iron-1-1/2"
8	22387	Flange-Inlet-Cast Iron-2"
8	22261	Flange-Inlet-Aluminum-1-1/2"
8	22385	Flange-Inlet-Aluminum-2"
8	22262	Flange-Inlet-Bronze-1-1/2"
8	22386	Flange-Inlet-Bronze-2"
9	22266	Flange-Inlet-Cast Iron-1-1/2"

9	22311	Flange-Inlet-Cast Iron-2"
9	22264	Flange-Inlet-Aluminum-1-1/2"
9	22309	Flange-Inlet-Aluminum-2"
9	22265	Flange-Inlet-Bronze-1-1/2"
9	22310	Flange-Inlet-Bronze-2"
SEAL		
10	22272	Seal Assy: Self-Lubricated
10	22290	Seal Assy: Grease Lubricated
18	22313	Grease Cup
11	22286	Drive Sleeve: S.S. 3/4" Bore
FLAPPER		
15	23022	Flapper Assy.
15	26097	Flapper Assy.-EPDM (Optional)
WEAR PLATE		
20	23024	Wear Plate Assy.-Steel-Includes: Wear Plate-Steel Flat Head Screw-5/16"-18 x 1'
21	21249	Annular Gasket
22	21248	Annular Gasket
20	22270	Wear Plate Assy.-Aluminum-Includes: Wear Plate-Steel Flat Head Screw-5/16"-18 x 1'
21	21249	Annular Gasket
22	21248	Annular Gasket
20	22271	Wear Plate Assy.-Bronze-Includes: Wear Plate-Steel Flat Head Screw-5/16"-18 x 1'
21	21249	Annular Gasket
22	21248	Annular Gasket
GASKET		
23	22255	Gasket
24	22256	Gasket-Outlet
24	25933	Gasket-EPDM-Optional
29	21237	Acorn Nut-5/16"-18
HYDRAULIC MOTOR & PEDESTAL ASSY.		
37/35	25465	Hydraulic Motor & Pedestal Assy. Includes:
35	25681	Pedestal Assy.
34	25472	Shaft
N/S	25470	Pedestal Casting
N/S	22301	Ball Bearings
N/S	25473	Adaptor Ring
N/S	25478	Retaining Ring
16	21242	Capscrew S.S. 5/16"-18 x 7/8"
26	21238	Lockwasher S.S. 5/16"
37	25476	Hydraulic Motor Only: Includes
36	21865	Woodruff Key #2
Not included:		
38	25477	Capscrew 5/16" x 4-1/2"
39	21238	Lockwasher S.S. 5/16"
N/S	26374	"O" Ring Repair Kit for Hydraulic Motor