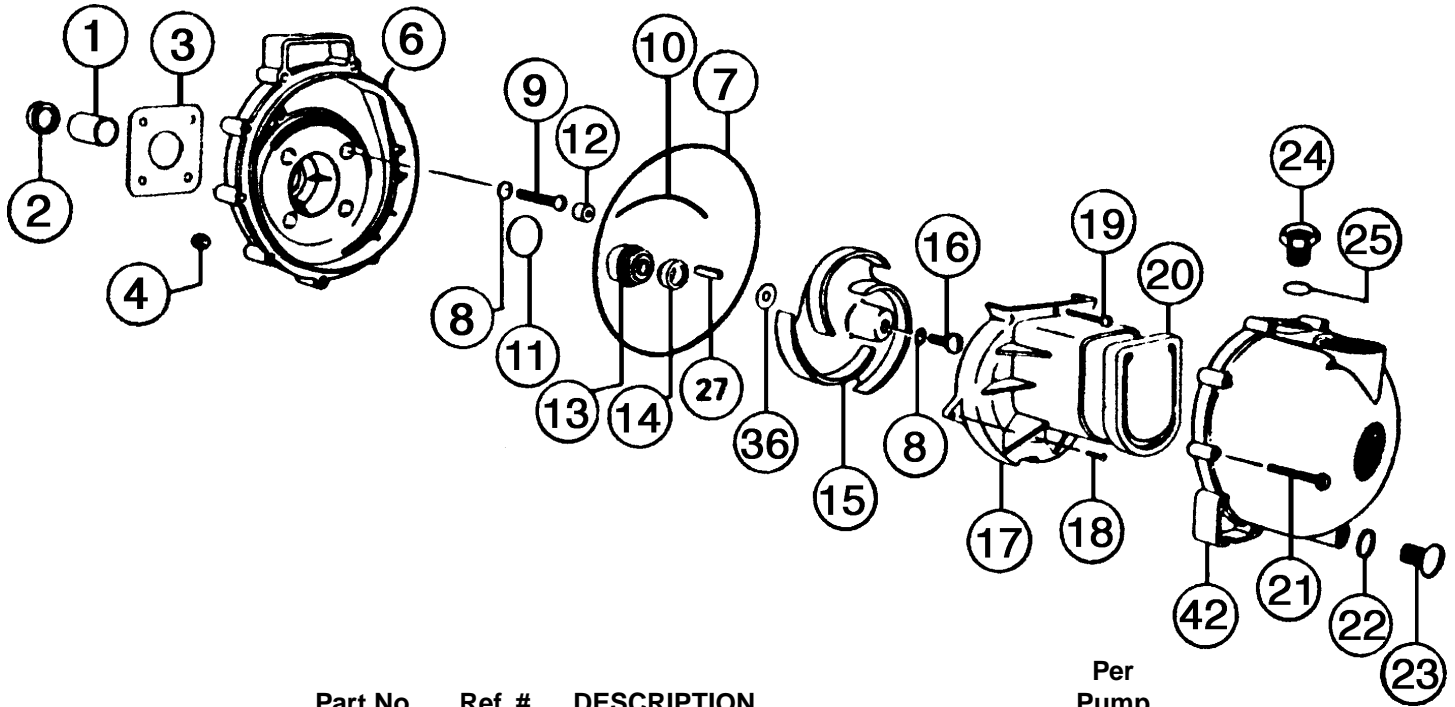


1-1/2" - 2" Self-Priming Centrifugal PACER Pumps



Part No.	Ref. #	DESCRIPTION	Per Pump
* 882.90	1	Shaft Sleeve	1
* 884.71	2	Slinger, Buna-N	1
* 751.90	3	Shim, Bracket	1
721.10	4	Nuts, Body, SS	10
703.30A	6	Bracket	1
719.72	7	O-Ring, Body, EPDM	1
* 717.72	8	O-Rings, Screw, EPDM	5
715.10	9	Screws, Bracket	4
* 754.72	10	O-Ring Segment, EPDM	1
* 976.72	11	O-Ring, Shaft Seal, EPDM	1
750.40	12	Plug	4
* 714.12	13-14	EPDM Shaft Seal	1
714.14	13-14	Viton Shaft Seal	1
667.30	15	Impeller, 3 vane, .535" Wide, 4.75" Dia.	
704.30	15	Impeller, 3 vane, .535" Wide, 5.50" Dia.	
974.30	15	Impeller, 4 vane, .600" Wide, 4.75" Dia.	
975.30	15	Impeller, 4 vane, .975" Wide, 4.75" Dia.	
706.30	15	Impeller, 5 vane, .535" Wide, 5.50" Dia.	
* 716.10	16	Screw, Impeller, SS	1
702.30	17	Volute, Flat	1
* 725.10	18	Screw, Side Volute	2
* 771.10	19	Screw, Top Volute	1
705.72	20	Check Valve, EPDM	1
720.10	21	Screws, Body, SS	10
1009.72	22	O-Ring, Drain Plug, EPDM	1
723.30	23	Plug, Drain	1
722.30	24	Plug, Filler	1
* 765.72	25	O-Ring, Fill Plug, EPDM	1
* 718.10	27	Key, SS, 1" Long	1
759.20	31	Bearing Pedestal	1
777.00	32	Bearing/Shaft Assy, STD	1
1001.30A	42	Smooth Body 1-1/2" NPT	1
1002.30A	42	Smooth Body 2" NPT	1

* INCLUDED IN 025 REPAIR KIT