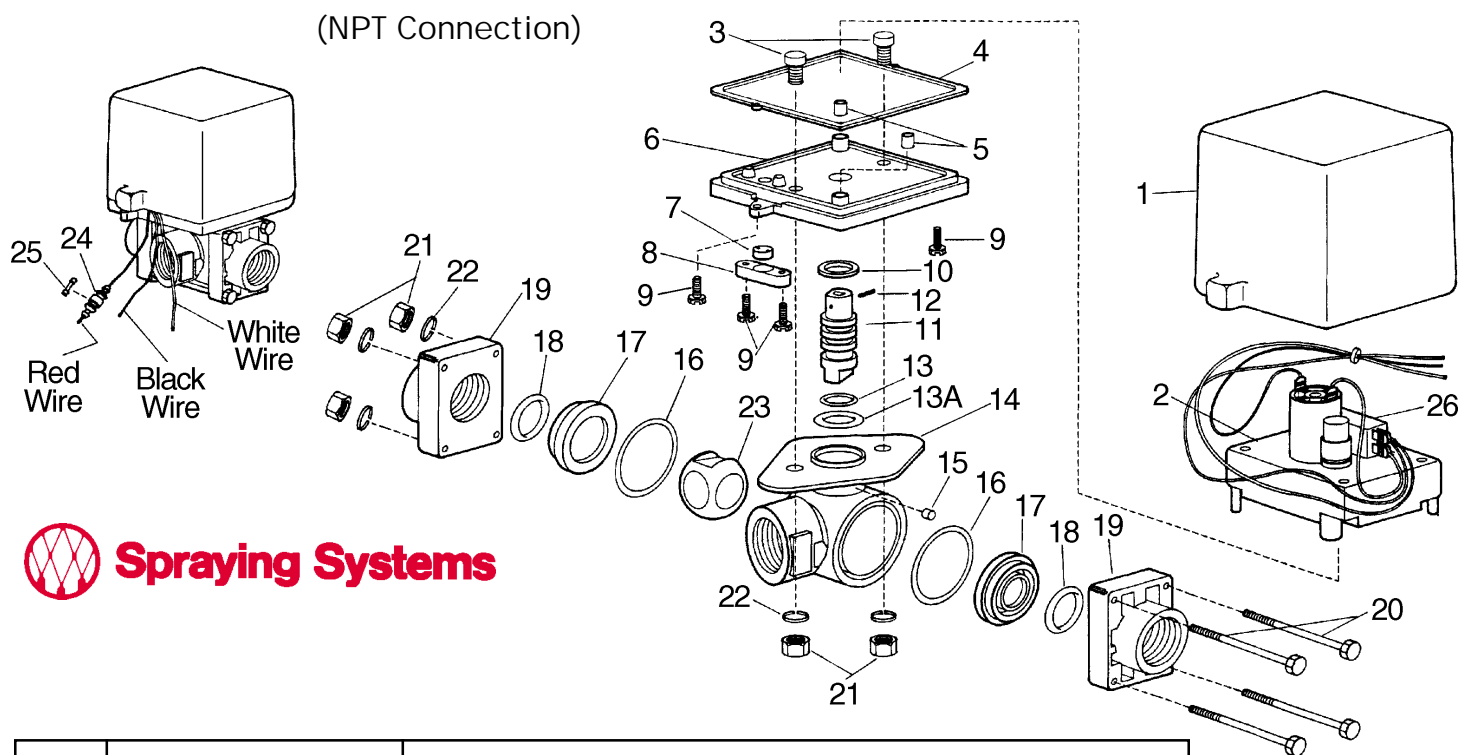


# No. AA344E-3-3/4 & AA344E-3-1 Remote Control Electric 3-Way Ball Valves



Item	Part No.	Description
1	CP20113-PPB	Cover, Polypropylene (Black)
2		Motor Sub-Assembly (Available in Spare Parts Kit AB344EM)
3	CP20127-SS	Self-Clinching Stud, Stainless Steel (2 Req'd)
4	CP22159-NR	Gasket, Cell Sponge Rubber
5	CP20124-NEO	Motor Mount, Neoprene (2 Req'd)
6	CP20111-NYB	Mounting Plate, Nylon (Black)
7	CP22158-EPR	Grommet, EPDM Rubber
8	CP22157-PP	Grommet Retainer, Polypropylene (Black)
9	CP20123-3/4-430SS	Slotted Hex Washer Screw, Type 430 Stainless Steel (4 Req'd)
*10	CP20125-TEF	Thrust Washer, Teflon
11	CP20110-NY	Ball Valve Stem, Nylon
12	CP23477-420SS	Spring Pin, Type 420 Stainless Steel
*13	CP7717-2/14-VI	O-Ring, Viton
*13A	CP7717-10-VITEF	O-Ring, Viton, Teflon Coated
14	CP20102-3/4-NYB	Body, Nylon (Black) For #344E-3-3/4
	CP20102-1-NYB	Body, Nylon (Black) For #344E-3-1
*15	CP20126-FELT	Dust Plug, Dense Felt
*16	CP7717-2/031-VI	O-Ring, Viton (2 Req'd)
*17	CP20103-TEF	Seal, Teflon (2 Req'd)
*18	CP7717-2/213-VI	O-Ring, Viton (2 Req'd)
19	CP20104-3/4-NYB	End Cap, Nylon (Black) for #344E-3-3/4 (2 Req'd)
	CP20104-1-NYB	End Cap, Nylon (Black) for #344E-3-1 (2 Req'd)
20	CP20129-SS	Hex Head Cap Screw, Stainless Steel (4 Req'd)
21	CP8535-SS	Hex Nut, Stainless Steel (6 Req'd)
22	CP20128-SS	Lock Washer, Stainless Steel (6 Req'd)
*23	CP20109-PP	Ball, Polypropylene
24	CP23496-NY	Fuse Holder, Nylon
25	CP21046-1.5-GLASS	Fuse, Glass
26	CP22872-PHE	Limit Switch, Phenolic (Included in item 2)
		No. AA344E-3-3/4, Remote Control Electric Three-Way Ball Valve
		No. AA344E-3-1, Remote Control Electric Three-Way Ball Valve
		AB344E-3-KIT - Spare Parts Kit (includes all items marked with *)
		AB344EM-KIT - Spare Parts Kit (includes items 2, 24 & 25)