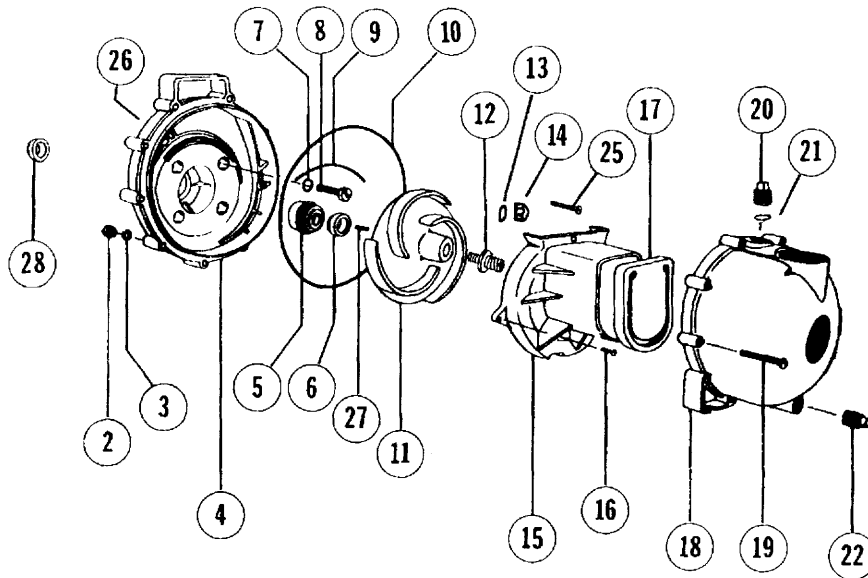


Poly Pumps (Sept. 1996 & Later) *Banjo*

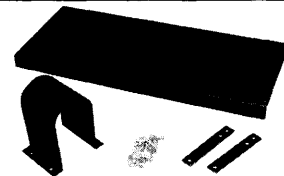


**POLY PUMP REPAIR PARTS LIST
FOR PUMPS MANUFACTURED PRIOR TO SEPT. 1996**

REF. NO.	DESCRIPTION	CAT. PG.	PER PUMP	PART		PRICE
				1 1/2"	2"	
2	Body Nuts	67	10	V07019	V07019	.32
3	Lock Washer	67	10	V07018	V07018	.32
4	Rear Bracket	67	1	12703	12703	62.51
5&6	Seal Assembly*+	67	1	12713	12713	31.26
7	O-Ring for Screw Heads*+	67	4	12717	12717	.47
8	Bracket Screws	67	4	12715	12715	2.63
9	O-Ring Segment*+	67	1	12754	12754	3.68
10	Body "O" Ring*+	67	1	12719A	12719A	9.46
11	Impeller+	67	1	12771	12771	26.79
12	Impeller Stud	67	1	12765	12765	11.82
13	O-Ring Acorn Nut*+	67	1	12774V	12774V	1.00
14	Acorn Nut	67	1	12775	12775	7.62
15	Volute	67	1	12702	12702	46.02
16	Volute Screws	67	2	12725	12725	2.36
17	Check Valve+	67	1	12705	12705	10.82
18	Body	67	1	12711A	12012	98.06
19	Body Screws	67	10	12720	12720	2.36
20	Prime Plug	67	1	12777	12777	1.58
21	O-Ring Prime Plug*+	67	1	12722	12722	.63
22	Drain Plug	67	1	12723	12723	1.37
25	Upper Volute Screw	67	1	12900	12900	1.05
26	1/4" S.S. Washer	67	4	12901	12901	.32
27	Impeller Key	67	1	12902	12902	1.10
28	Slinger O-Ring*+	67	3	12722	12722	.63
29	Seal O-Ring*+	67	1	12710	12710	2.31
N/S	Complete Pedestal Assy.	67	1	12882A	12882A	152.34
	Pump Repair Kit (Consists of Items Marked With +)	67	1	12000	12000	71.70
	Pump Seal/O-Ring Kit (Consists of Items Marked With *)	67	1	12999	12999	43.60

REPAIR PARTS LIST FKM (VITON TYPE) - NEW DESIGN

PART NO.	DESCRIPTION	CAT. PG.	QTY.	PRICE EA.
12713V	FKM (viton type) Seal Assy. with 316 SS Cup & Spring	Not Shown	1	50.43
12719AV	FKM (viton type) Body O-Ring	Not Shown	1	43.60
12717V	FKM (viton type) O-Ring For Screw Head	Not Shown	4	.74
12754V	FKM (viton type) O-Ring Segment	Not Shown	1	6.36
12774VA	FKM (viton type) O-Ring For Acorn Nut	Not Shown	1	1.00
12705V	FKM (viton type) Check Valve	Not Shown	1	76.17
UV15163V	Prime Plug O-Ring FKM (viton type)	Not Shown	1	2.31
12710V	FKM (viton type) O-Ring For Seal Assy.	Not Shown	1	6.83
12000AV	1 1/2" & 2" FKM (viton type) Repair Kit	Not Shown	1	168.10
13000V	3" FKM (viton type) Repair Kit	Not Shown	1	171.77
12999AV	1 1/2" & 2" FKM (viton type) Pump Seal/O-Ring Kit	Not Shown	1	80.79
13999V	3" FKM (viton type) Pump Seal/O-Ring Kit	Not Shown	1	80.79



UNIVERSAL BASE PLATE ASSEMBLY

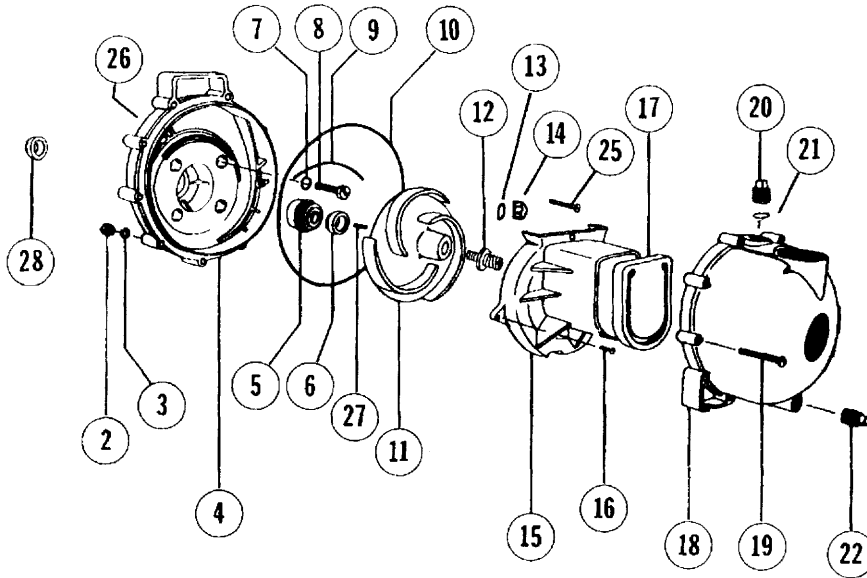
PART NO.	DESCRIPTION	CAT. PG.	BOX WT.	QTY.	PRICE EA.
18700	Base Plate Assembly (Plate, Coupling Guard, Bolt Bag And Shims (Fits 1 1/2", 2" And 3" Cast Iron Or Poly Pump))	67	37 lbs.	1 pc.	265.80
18702	Replacement Coupling Guard	67	3.04 lbs.	1 pc.	22.06

POLYETHYLENE SUCTION BASKET STRAINER



PART NO.	DESCRIPTION	CAT. PG.	BOX WT.	QTY.	PRICE EA.
150SBS	1 1/2" Female Thread Poly Basket	67	.25 lbs.	1 pc.	10.72
200SBS	2" Female Thread Poly Basket	67	.25 lbs.	1 pc.	10.72
300SBS	3" Female Thread Poly Basket	67	.25 lbs.	1 pc.	24.16

Poly Pumps (Pre Sept. 1996) *Banjo*

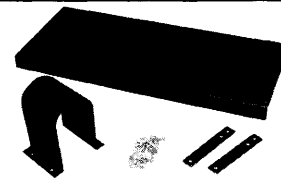


**POLY PUMP REPAIR PARTS LIST
FOR PUMPS MANUFACTURED PRIOR TO SEPT. 1996**

REF. NO.	DESCRIPTION	CAT. PG.	PER PUMP	PART		PRICE
				1 1/2"	2"	
2	Body Nuts	67	10	V07019	V07019	.32
3	Lock Washer	67	10	V07018	V07018	.32
4	Rear Bracket	67	1	12703	12703	62.51
5&6	Seal Assembly*+	67	1	12713	12713	31.26
7	O-Ring for Screw Heads*+	67	4	12717	12717	.47
8	Bracket Screws	67	4	12715	12715	2.63
9	O-Ring Segment*+	67	1	12754	12754	3.68
10	Body "O" Ring*+	67	1	12719A	12719A	9.46
11	Impeller+	67	1	12771	12771	26.79
12	Impeller Stud	67	1	12765	12765	11.82
13	O-Ring Acorn Nut*+	67	1	12774V	12774V	1.00
14	Acorn Nut	67	1	12775	12775	7.62
15	Volute	67	1	12702	12702	46.02
16	Volute Screws	67	2	12725	12725	2.36
17	Check Valve+	67	1	12705	12705	10.82
18	Body	67	1	12711A	12012	98.06
19	Body Screws	67	10	12720	12720	2.36
20	Prime Plug	67	1	12777	12777	1.58
21	O-Ring Prime Plug*+	67	1	12722	12722	.63
22	Drain Plug	67	1	12723	12723	1.37
25	Upper Volute Screw	67	1	12900	12900	1.05
26	1/4" S.S. Washer	67	4	12901	12901	.32
27	Impeller Key	67	1	12902	12902	1.10
28	Slinger O-Ring*+	67	3	12722	12722	.63
29	Seal O-Ring*+	67	1	12710	12710	2.31
N/S	Complete Pedestal Assy.	67	1	12882A	12882A	152.34
	Pump Repair Kit (Consists of Items Marked With +)	67	1	12000	12000	71.70
	Pump Seal/O-Ring Kit (Consists of Items Marked With *)	67	1	12999	12999	43.60

REPAIR PARTS LIST FKM (VITON TYPE) - NEW DESIGN

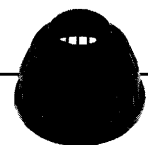
PART NO.	DESCRIPTION	CAT. PG.	QTY.	PRICE EA.
12713V	FKM (viton type) Seal Assy. with 316 SS Cup & Spring	Not Shown	1	50.43
12719AV	FKM (viton type) Body O-Ring	Not Shown	1	43.60
12717V	FKM (viton type) O-Ring For Screw Head	Not Shown	4	.74
12754V	FKM (viton type) O-Ring Segment	Not Shown	1	6.36
12774VA	FKM (viton type) O-Ring For Acorn Nut	Not Shown	1	1.00
12705V	FKM (viton type) Check Valve	Not Shown	1	76.17
UV15163V	Prime Plug O-Ring FKM (viton type)	Not Shown	1	2.31
12710V	FKM (viton type) O-Ring For Seal Assy.	Not Shown	1	6.83
12000AV	1 1/2" & 2" FKM (viton type) Repair Kit	Not Shown	1	168.10
13000V	3" FKM (viton type) Repair Kit	Not Shown	1	171.77
12999AV	1 1/2" & 2" FKM (viton type) Pump Seal/O-Ring Kit	Not Shown	1	80.79
13999V	3" FKM (viton type) Pump Seal/O-Ring Kit	Not Shown	1	80.79



UNIVERSAL BASE PLATE ASSEMBLY

PART NO.	DESCRIPTION	CAT. PG.	BOX WT.	QTY.	PRICE EA.
18700	Base Plate Assembly (Plate, Coupling Guard, Bolt Bag And Shims (Fits 1 1/2", 2" And 3" Cast Iron Or Poly Pump))	67	37 lbs.	1 pc.	265.80
18702	Replacement Coupling Guard	67	3.04 lbs.	1 pc.	22.06

POLYETHYLENE SUCTION BASKET STRAINER



PART NO.	DESCRIPTION	CAT. PG.	BOX WT.	QTY.	PRICE EA.
150SBS	1 1/2" Female Thread Poly Basket	67	.25 lbs.	1 pc.	10.72
200SBS	2" Female Thread Poly Basket	67	.25 lbs.	1 pc.	10.72
300SBS	3" Female Thread Poly Basket	67	.25 lbs.	1 pc.	24.16