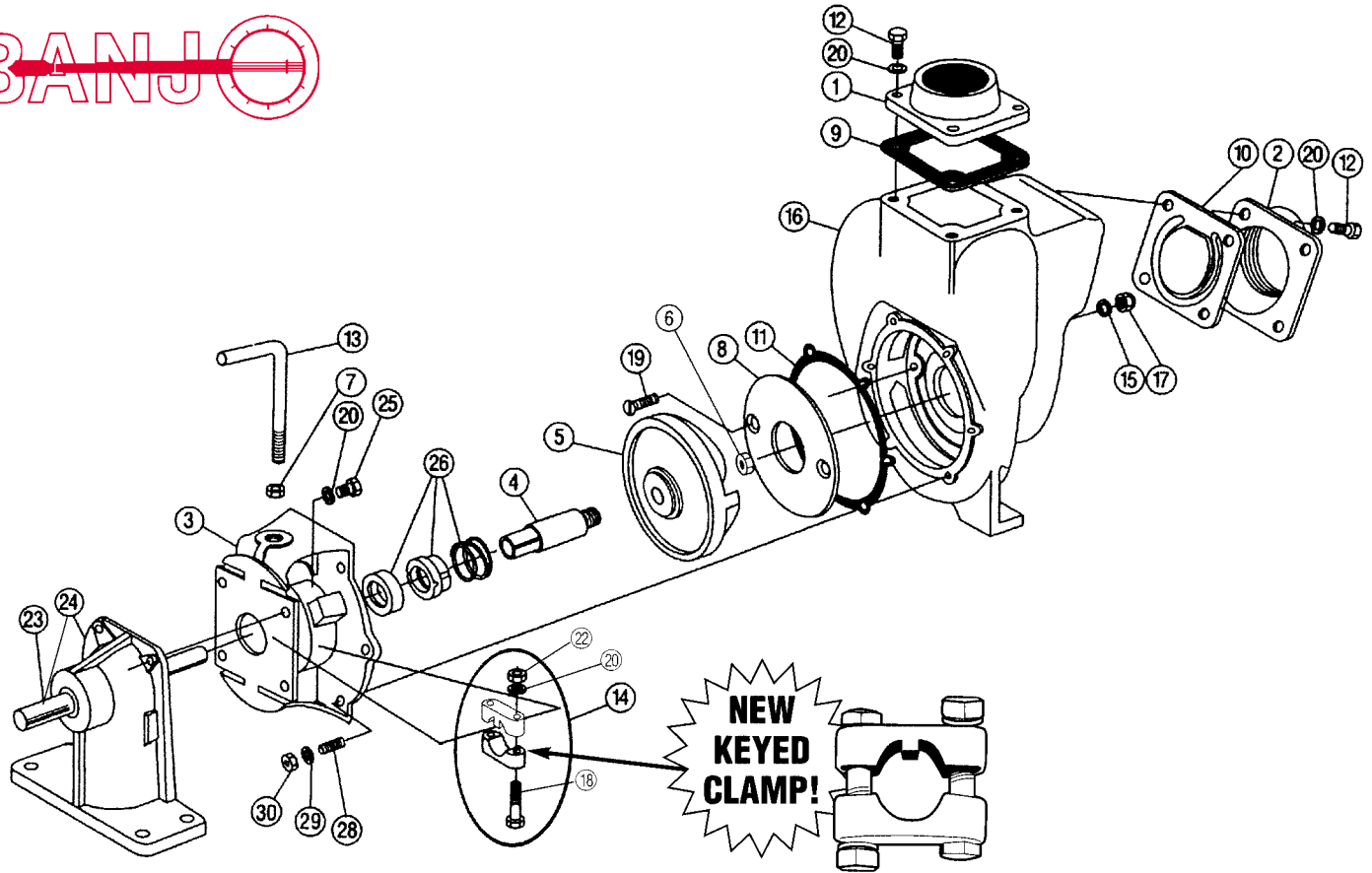


# 1-1/2" & 2" Banjo Pedestal Pump, Self Priming



ITEM	PART NO.	DESCRIPTION	QTY./PUMP
N/S	17100	Pump Repair Kit (1 1/2" & 2") (Consists of items marked*)	1
1	17000	Flange — Outlet 2"	1 (2" only)
1	17001	Flange — Outlet 1 1/2"	1 (1 1/2" only)
2	17002	Flange — Inlet 20° 2"	1 (2" only)
2	17003	Flange — Inlet 20° 1 1/2"	1 (1 1/2" only)
3	17004	Adapter — Gas Engine	1
3	17046	CF Adapter For Close Coupled Electric Drive Pump	1
4	17005	Sleeve Drive 5/8"	1 (1/pump)
4	17006*	Sleeve Drive 3/4"	1 (1/pump)
4	17007	Sleeve Drive 7/8"	1 (1/pump)
5	17008*	Impeller — 5"	1
5	17008-4.6	Impeller — 4.6"	1
5	17008-4.1	Impeller — 4.1"	1
6	17009B	Nut, Hex 1/2" — 13UNC	1
7	17010	Nut, Hex 1/2" — 13 UNF — RH	1
8	17011*	Wear Plate	1
9	17013	EPDM Gasket	1
10	17016	Gasket-Checkvalve Assy. EPDM	1
11	17018*	Gasket Adapter	1
12	17019	Capscrew 5/16" — 18 x 3/4"	8
13	17022	Handle	1 (1/pump)

ITEM	PART NO.	DESCRIPTION	QTY./PUMP
14	17023	Clamp 5/8", 3/4" Shaft Assy. (Old Style)	1 (1/pump)
14	17123	Clamp 5/8", 3/4" Shaft Assy. (Keyed)	1 (1/pump)
14	17024	Clamp 7/8" Shaft Assy.	1 (1/pump)
15	17025*	Wear Plate Gasket	2
16	17026	Pump Housing	1
17	17027	SS Acorn Nut 5/16" — 18	2
18	17029	Cap Screw 5/16" — 18 x 1 3/4"	2
19	17030*	Flat Head 82° C Screw	2
20	V10118	5/16" Lock Washer	16
23	12883R	3/4" Shaft only	1
24	12882A	Complete Pedestal Assy.	1
24	12882R	Bearing Pedestal Housing Only	1
N/S	12883B	Bearing Only	2
N/S	12884	Retaining Ring	1
25	17040	Cap Screw 5/16" — 24 NF	4
26	17028	Seal Assy. (EPDM)	1 (1/pump)
26	17035*	Seal Assy. (Viton)	1 (1/pump)
28	17042	Stud	6
29	V10118	Lockwasher 5/16"	8
30	V10119	Nut 5/16" — 18 UNC SS Hex Nut	8
N/S	17032	1/4" Drain Plug	1 (Not Shown)
N/S	17020	SS Flap Washer (Sm)	1 (Not Shown)
N/S	17021	SS Flap Washer (Lg)	1 (Not Shown)
N/S	17033	Z Rails	Pair