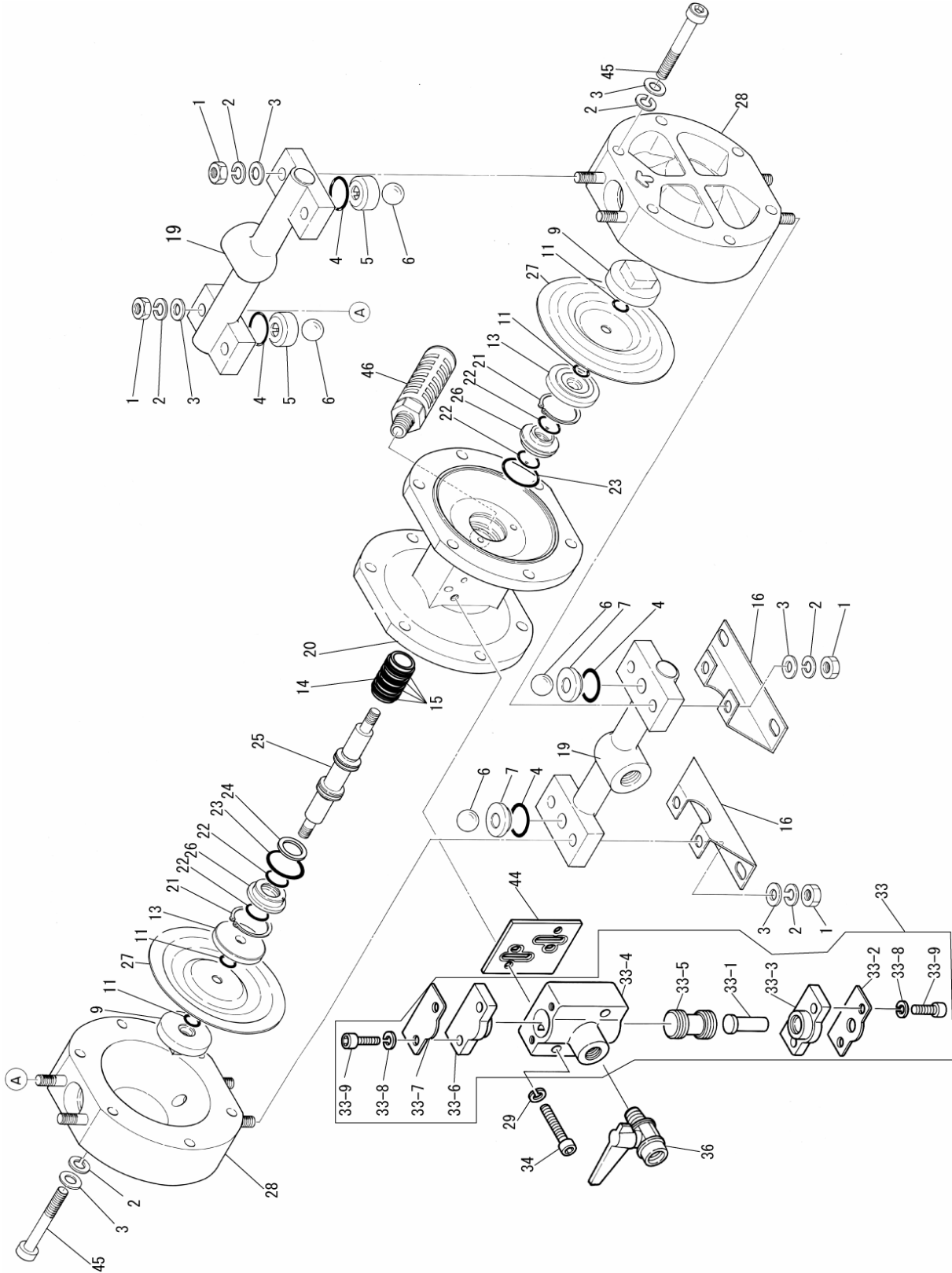


### 9.3 Exploded View

■ DP-10BP □



9.3 Parts List

■DP-10BP□

NO.	BP□	DESCRIPTION	Q'TY	NOTE
1	628012	NUT	8	M8x1.25
2	681300	SPRING LOCK WASHER	20	M8
3	631329	PLAIN WASHER	20	M8
4	Tab.5	O RING	-	
5	771136	VALVE STOPPER	2	
6	Tab.1	BALL	4	
7	Tab.6	VALVE SEAT	2	
9	770968	CENTER DISK	2	
11	Tab.2	O RING	4	
13	709512	CENTER DISK	2	
14	714678	SLEEVE	1	
15	684900	O RING	4	
16	708511	PUMP BASE	2	
19	831316	MANIFOLD ASSEMBLY	2	
20	715107	BODY	1	
21	630807	RETAINING RING R TYPE	2	
22	684284	PACKING	4	MYA-14
23	640131	O RING	2	G30 NBR
24	772651	SPACER	1	
25	801785	CENTER ROD ASSEMBLY	1	
26	772619	GUIDE BUSH	2	
27	Tab.3	DIAPHRAGM	2	
28	780194	OUT CHAMBER	2	
29	681855	SPRING LOCK WASHER	2	M6
33	804505	VALVE BODY ASSEMBLY	1	
34	682918	HEXAGON SOCKET HEAD BOLT	2	M6x1x35
36	683055	BALL VALVE	1	1/4"
44	771358	GASKET	1	
45	682945	HEXAGON SOCKET HEAD BOLT	12	M8x1.25x50
46	682520	SILENCER	1	
51	790911	NAME PLATE	1	

NOTE) NO.51(NAME PLATE) IS NOT INDICATED IN EXPLODED VIEW

9.4 Parts List ■ DP-10 COMMON PARTS

804505 VALVE BODY ASSEMBLY

NO.	PART NO	DESCRIPTION	Q'TY	NOTE
33-1	706798	PUSH ROD	1	
33-2	710587	REINFORCEMENT PLATE A	1	
33-3	771357	CAP	1	
33-4	710853	SPOOL VALVE CASE	1	
33-5	801404	SPOOL VALVE ASSEMBLY	1	
33-6	771356	CAP	1	
33-7	710636	REINFORCEMENT PLATE B	1	
33-8	681855	SPRING LOCK WASHER	4	M6
33-9	682943	HEXAGON SOCKET HEAD BOLT	4	M6x1x18

Tab.1 BALL

TYPE	BA/BS/BP□	MATERIAL
B□C	770970	CR
B□N	770972	NBR
B□T	770931	PTFE
B□H	770972	NBR
B□S	771978	EPDM

Tab.2 O RING(P8)

TYPE	BA/BS/BP□	MATERIAL
B□C	640005	NBR
B□N	640005	NBR
B□T	643005	PTFE
B□H		
B□S		

Tab.3 DIAPHRAGM

TYPE	BA/BS/BP□	MATERIAL
B□C	770971	CR
B□N	770973	NBR
B□T	770933	PTFE
B□H	771372	TPEE
B□S	771972	TPO

Tab.4 O RING(P21)

TYPE	BS/BP□	MATERIAL
B□C	640018	NBR
B□N	640018	NBR
B□T	643018	PTFE
B□H	640018	NBR
B□S	684112	EPDM

Tab.5 O RING(P21)

TYPE	BP□	MATERIAL	Q'TY
BPC	640018	NBR	2
BPN	640018	NBR	2
BPT	643018	PTFE	4
BPH	640018	NBR	4
BPS	684112	EPDM	4

Tab.6 VALVE SEAT

TYPE	BP□	MATERIAL
BPC	770975	CR
BPN	770976	NBR
BPT	771187	PPG
BPH	771187	PPG
BPS	771187	PPG