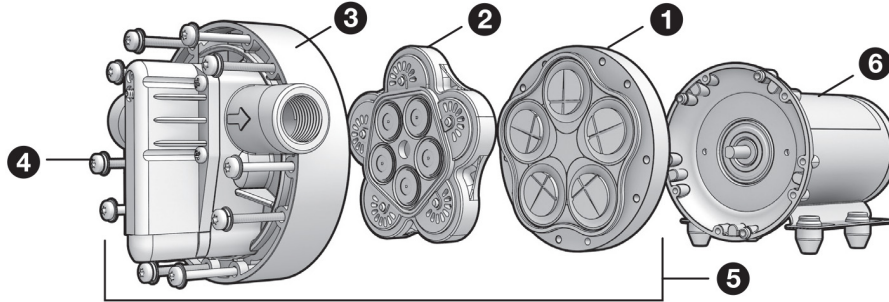


# ProFlo™ 5500 Series | Replacement Parts



## 1 Lower Housing Assembly

Part Number	GPM	Description
LHA-5510-1E77	3.0-3.6 GPM	DEMAND OR BYPASS
LHA-5512-1E77	4 GPM	DEMAND OR BYPASS
LHA-5513-1E77	5.3 GPM	DEMAND OR BYPASS

## 2 Valve Housing Assembly

Part Number	GPM	Description
VHA-5513-1E77	3.0-5.3 GPM	DEMAND OR BYPASS

## 3 Upper Housing Assembly

Part Number	GPM	Description
UHA-5513-1E77	3.0-5.3 GPM	THREADED W/ PRESSURE SWITCH
UHA-5513-2E77	3.0-5.3 GPM	THREADED W/ BYPASS
UHA-5503-1E77	3.0-5.3 GPM	QUICK ATTACH W/ PRESSURE SWITCH
UHA-5503-2E77	3.0-5.3 GPM	QUICK ATTACH W/ BYPASS

## 4 Mounting Bolt Kit

Part Number	GPM	Description
11-133-100	3.0-5.3 GPM	5 MOUNTING BOLTS W/ WASHERS

## 5 Complete Pump Head Assembly

Part Number	GPM	Description
5510-1X77	3.0-3.6 GPM	THREADED W/ PRESSURE SWITCH
5510-2X77	3.0-3.6 GPM	THREADED W/ ADJUSTABLE BYPASS
5512-1X77	4.0 GPM	THREADED W/ PRESSURE SWITCH
5512-2X77	4.0 GPM	THREADED W/ ADJUSTABLE BYPASS
5513-1X77	5.3 GPM	THREADED W/ PRESSURE SWITCH
5513-2X77	5.3 GPM	THREADED W/ ADJUSTABLE BYPASS
5500-1X77	3.0-3.6 GPM	QUICK ATTACH W/ PRESSURE SWITCH
5500-2X77	3.0-3.6 GPM	QUICK ATTACH W/ ADJUSTABLE BYPASS
5502-1X77	4.0 GPM	QUICK ATTACH W/ PRESSURE SWITCH
5502-2X77	4.0 GPM	QUICK ATTACH W/ ADJUSTABLE BYPASS
5503-1X77	5.3 GPM	QUICK ATTACH W/ PRESSURE SWITCH
5503-1X77	5.3 GPM	QUICK ATTACH W/ ADJUSTABLE BYPASS

## 6 12 VDC Motor

Part Number	GPM	Description
M582-S	3.0 GPM / 5.3 GPM	W/2 PIN CONNECTOR, NO ON/OFF SWITCH