

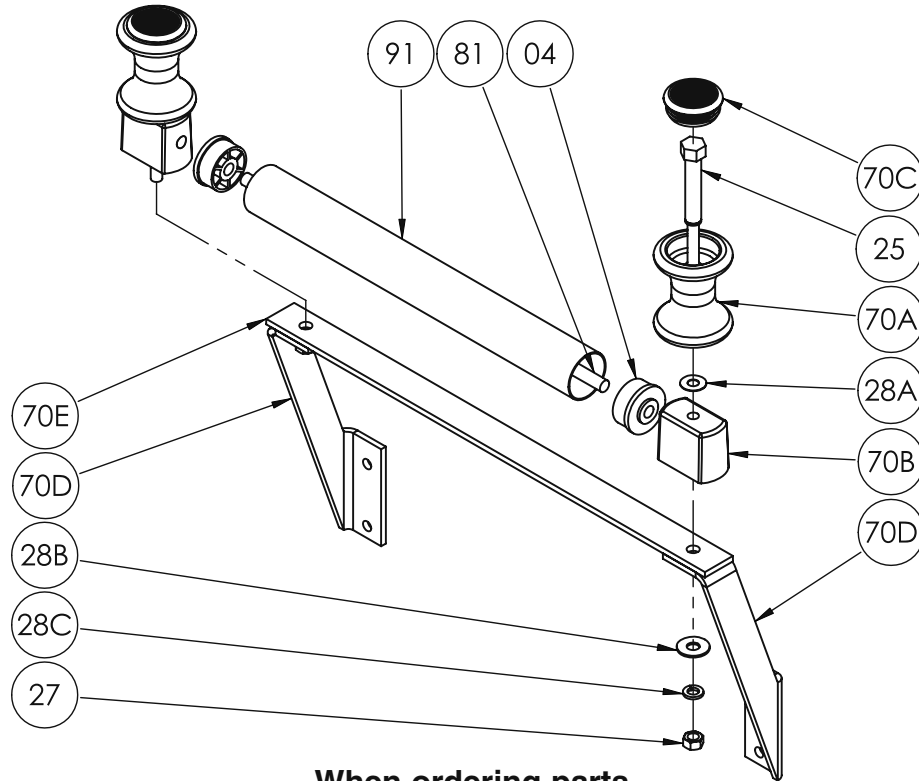


Hannay Reels®

The reel leader.

Hannay Reels, Inc., 553 State Route 143
 Westerlo, NY 12193
 Telephone 518-797-3791 • Toll Free 1-877-GO-REELS (467-3357)
 FAX 1-800-REELING (733-5464)
 INT'L FAX (518) 797-3259
 Website: www.hannay.com
 E-mail: reels@hannay.com

ISO 114 PARTS LIST FH-3 ROLLER & SPOOL ASSEMBLY

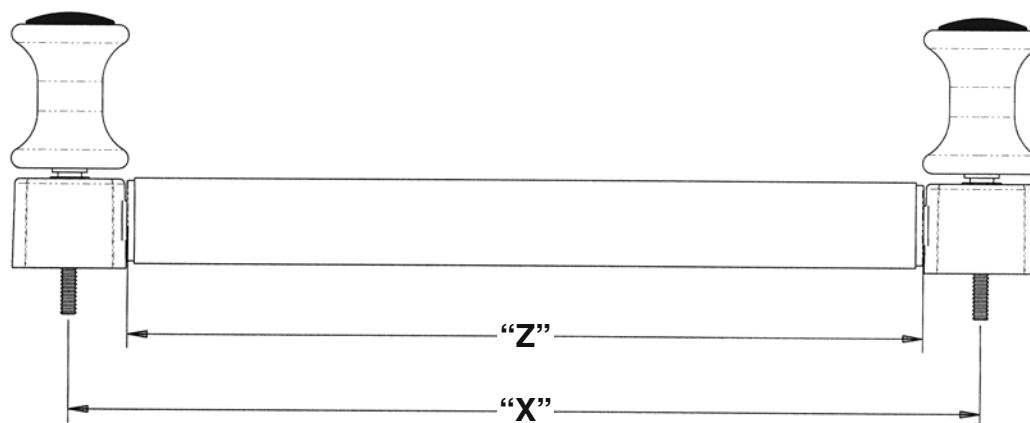


When ordering parts
BE SURE TO SPECIFY COMPLETE MODEL NUMBER and SERIAL NUMBER OF REEL.
USE PART NUMBER!

| Item No. | Description | PART NUMBER | Quantity |
|---|--|-------------|----------|
| 04 | FH-302-2 (2" Trunnion Bearing) | 9940.0008 | 2 |
| 25 | FH-307 plastic-coated step bolt with hardware (Includes 27, 28B & 28C) | 9940.0012 | 2 |
| 27 | FH-306 hex nut (7/16"-14) | 9940.0011 | 2 |
| 28A | Nylon washer (1" OD x 7/16" ID x 0.032" thick) | 9940.0014 | 2 |
| 28B | 7/16" Flat Washer | 9954.0009 | 2 |
| 28C | 7/16" Lock Washer | 9954.0029 | 2 |
| 70A | FH-301 Spool (chrome-plated), per P70A-01610..... | 9940.0005 | 2 |
| 70B | FH-302 Block (chrome-plated) | 9940.0006 | 2 |
| 70C | FH-309-P Black Plastic Cap | 9940.0002 | 2 |
| 70D | FH-3 Top-Wind Mounting Bracket Steel Pair, per P70A-01150..... | 9940.0060 | 1 |
| 70D | FH-3 Top-Wind Mounting Bracket Aluminum Pair, per P70A-01150..... | 9940.0061 | 1 |
| 70E | FH-3 Center Mounting Bracket Steel (Specify Model) | 9940.0062 | 1 |
| 70E | FH-3 Center Mounting Bracket Aluminum (Specify Model) | 9940.0066 | 1 |
| 81 | FH-304 SST Roller Rod (Specify Length)..... | 9940.0009 | 1 |
| 91 | FH-305 2" SST Roller Tubing (Polished) (Specify Length)..... | 9940.0010 | 1 |
| Complete Assemblies (Mounting brackets (70D and 70E) must be ordered separately) | | | |
| N/A | FH Spool Assembly (Pair) (Less SST Roller, Rod & Trunnion Bearings)..... | 9940.0013 | 1 |
| N/A | FH-3 Complete Roller & Spool Assembly (Specify Length, up to 30" Drum).... | 9939.0042 | 1 |
| N/A | FH-3 Complete Roller & Spool Assembly (Specify Length, 31" to 50" Drums) | 9939.0043 | 1 |

– see back –

FH-3 Roller Models



| FH Roller Model | Hannay # | Drum Length (in) | Roller Length "Z" w/bushings (in) | Mtg. Hole "X" Dimension (in) |
|-------------------|-----------|------------------|-----------------------------------|------------------------------|
| FH-306 | 9939.0027 | 6.0 | 6.5 | 9.25 |
| FH-307.5 | 9939.0029 | 7.5 | 8.0 | 10.75 |
| FH-308 | 9939.0021 | 8.0 | 8.5 | 11.25 |
| FH-309.5 | 9939.0030 | 9.5 | 10.0 | 12.75 |
| FH-310 | 9939.0022 | 10.0 | 10.5 | 13.25 |
| FH-311.5 | 9939.0031 | 11.5 | 12.0 | 14.75 |
| FH-312 | 9939.0028 | 12.0 | 12.5 | 15.25 |
| FH-313.5 | 9939.0032 | 13.5 | 14.0 | 16.75 |
| FH-314 | 9939.0024 | 14.0 | 14.5 | 17.25 |
| FH-315.5 | 9939.0033 | 15.5 | 16.0 | 18.75 |
| FH-316 | 9939.0025 | 16.0 | 16.5 | 19.25 |
| FH-317.5 | 9939.0034 | 17.5 | 18.0 | 20.75 |
| FH-318 | 9939.0026 | 18.0 | 18.5 | 21.25 |
| FH-320 | 9939.0035 | 20.0 | 20.5 | 23.25 |
| FH-322 | 9939.0036 | 22.0 | 22.5 | 25.25 |
| FH-324 | 9939.0037 | 24.0 | 24.5 | 27.25 |
| FH-326 | 9939.0038 | 26.0 | 26.5 | 29.25 |
| FH-328 | 9939.0039 | 28.0 | 28.5 | 31.25 |
| FH-329.5 | 9939.0040 | 29.5 | 30.0 | 32.75 |
| FH-330 | 9939.0020 | 30.0 | 30.5 | 33.25 |
| FH-338 | 9939.0041 | 38.0 | 38.5 | 41.25 |
| All other lengths | 9939.0042 | --- | --- | --- |

NOTES: 1) Actual roller tubing cut length is 5/8" less than "Z" dimension.
 2) FH cross-bracket piece is always 6" longer than drum length of reel.