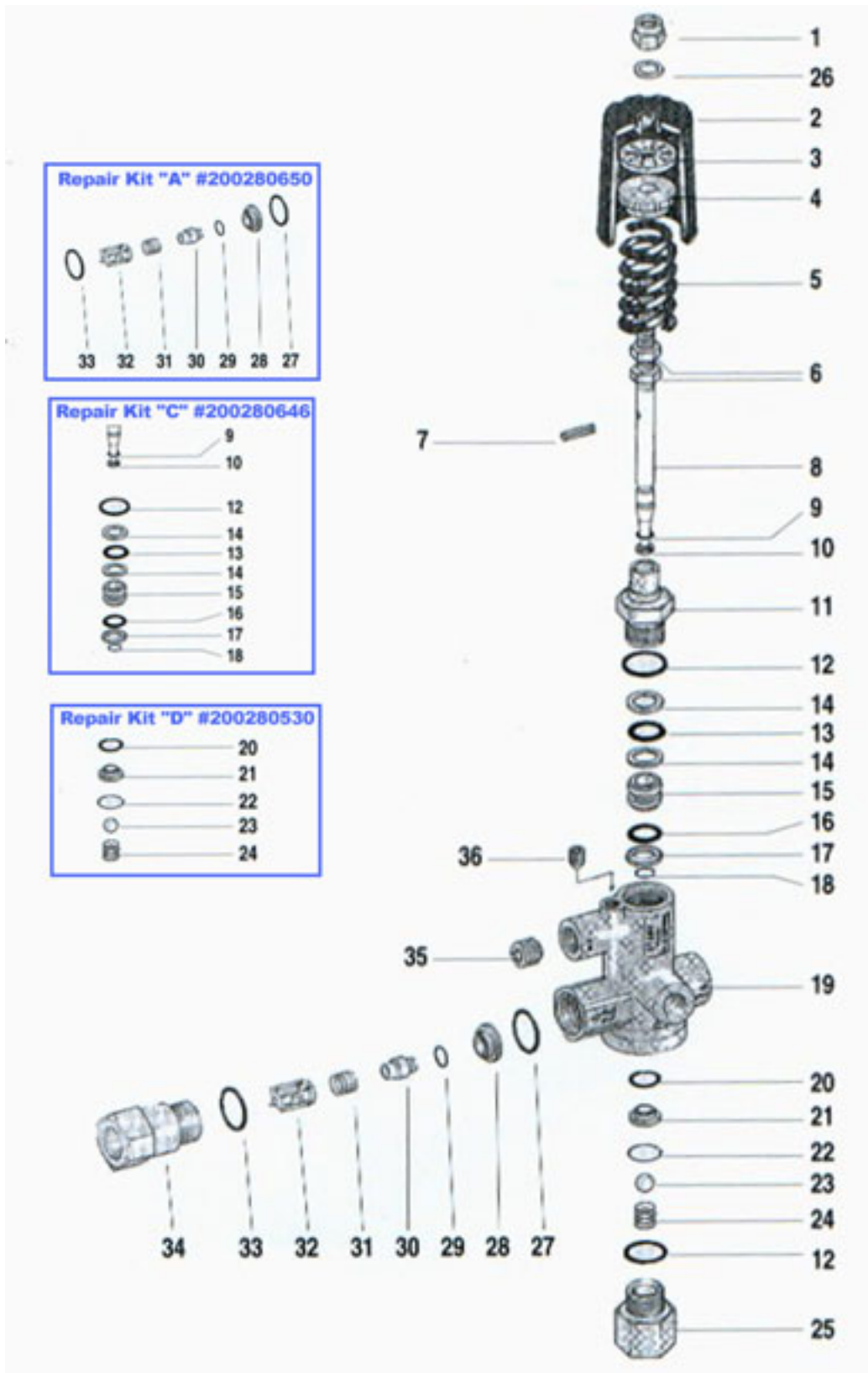


ST-280 Unloader Valve #200280510

Part numbers on following page



ST-280 Unloader Valve #200280510

Drawing on previous page

<i>Item</i>	<i>Order #</i>	<i>Description</i>
1	040001460	Nut
2	200280490	Hand wheel, complete
3	200280480	Needle bearing
4	010004050	Pressure piece
5	060000750	Spring
6	040001450	Nut
7	040001441	Pin
8	040001400	Piston rod
**9	In Repair Kit "C"	O-ring
**10	In Repair Kit "C"	Back ring
11	010004040	Guiding screw
**12	In Repair Kit "C"	O-ring
**13	In Repair Kit "C"	O-ring
**14	In Repair Kit "C"	Back ring
**15	In Repair Kit "C"	Piston
**16	In Repair Kit "C"	O-ring
**17	In Repair Kit "C"	Back ring
**18	In Repair Kit "C"	Circlip for shafts
19	010004005	Brass housing
•20	In Repair Kit "D"	O-ring
•21	In Repair Kit "D"	Valve seat
•22	In Repair Kit "D"	Circlip for bores
•23	In Repair Kit "D"	Stainless steel ball
•24	In Repair Kit "D"	Spring
25	010004010	Inlet nut 3/8" female
26	130000190	Washer
*27	In Repair Kit "A"	O-ring
*28	In Repair Kit "A"	Seal
*29	In Repair Kit "A"	O-ring
*30	In Repair Kit "A"	Valve part
*31	In Repair Kit "A"	Spring
*32	In Repair Kit "A"	Valve housing
*33	In Repair Kit "A"	O-ring
34	010004035	Outlet nut 3/8" female
35	010000355	Stop nut
36	010002575	Stop nut
*	200280650	Repair kit "A"
**	200280646	Repair kit "C"
•	200280530	Repair kit "D"

* Item = Individual item only available in kit listed