

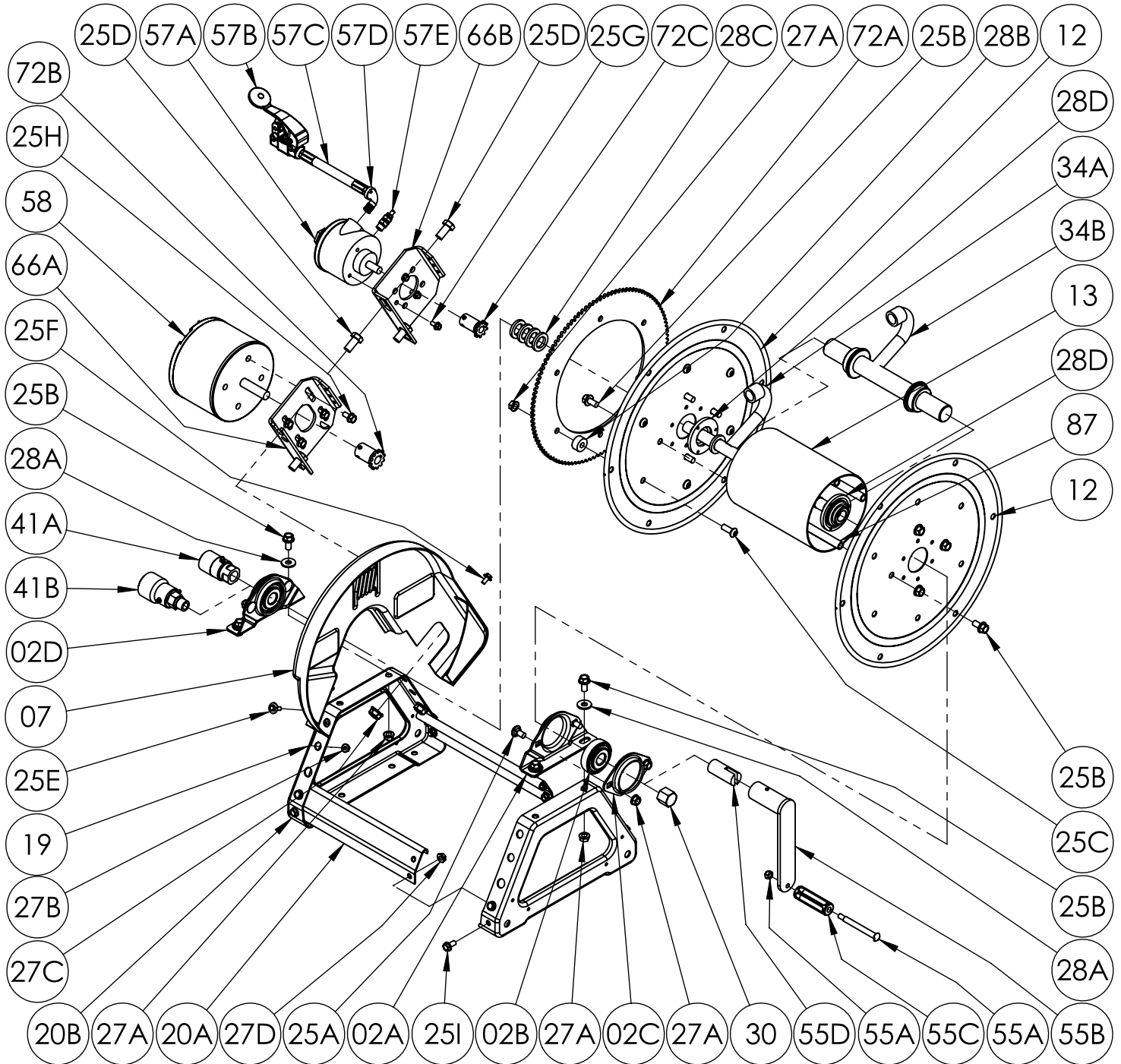


Hannay Reels®

The reel leader.

Hannay Reels, Inc., 553 State Route 143
Westerlo, NY 12193
Telephone 518-797-3791 • Toll Free 1-877-GO-REELS (467-3357)
FAX 1-800-REELING (733-5464)
INT'L FAX (518) 797-3259
Website: www.hannay.com
E-mail: reels@hannay.com

ISO 90 PARTS LIST SERIES 1500 Power Rewind



PARTS LIST
ISO 90
SERIES 1500 - POWER REWIND

When ordering parts

BE SURE TO SPECIFY COMPLETE MODEL NUMBER and SERIAL NUMBER OF REEL.

USE PART NUMBER!

| Item No. | Description | PART NUMBER | Quantity |
|---|--|-------------|----------|
| 02A | Self Aligning Bearing Pillow Block (Steel E-Coated)..... | 9902.2900 | 2 |
| 02B | 1/2" Self Aligning Bearing Insert Plated | 9902.1300 | 2 |
| 02C | Self Aligning Bearing Holder (Steel E-Coated) | 9902.2800 | 2 |
| 02D | 1/2" S.A. Bearing Complete (Inc. 02A, 02B, 02C, 25A and 27A)..... | 9902.1200 | 2 |
| 02E | 1" Self Aligning Bearing Insert Plated (EFH1500 Only) (Not Shown)..... | 9902.1500 | 2 |
| 02F | 1" S.A. Bearing (Inc. 02A, 02C, 02E, 25A and 27A) (EFH1500 Only) (Not Shown) | 9902.1400 | 2 |
| 06 | #35 Chain- 116 Links (43-1/2" Long) w/ Connecting Link (Not Shown)..... | 9912.0028 | 1 |
| 07 | Molded Chain Guard for Motor on Left, per P07A-00190 | 9957.0030 | 1 |
| 07 | Molded Chain Guard for Motor on Right, per P07A-00200 (Not Shown)..... | 9957.0031 | 1 |
| 12 | (17-18) 16-1/2" Dia. Disc for 1500 Series | 9903.0516 | 2 |
| 13 | 6" Dia. Aluminum Drum (Specify Model) | 9905.7112 | 1 |
| 19 | Trapezoid Frame Assembly (Specify Model) (Steel E-Coated) | 9908.1000 | 1 |
| 20A | 1500 Style Foot Stock (Specify Model) (Steel E-Coated) | 9907.6000 | 2 |
| 20B | 1500/4000 Series Trapezoid Side Frame (Steel E-Coated) | 9906.0011 | 2 |
| 25A | 3/8"-16 x 3/4" Carriage Bolt (For Bearings)..... | 9904.0201 | 4 |
| 25B | 3/8"-16 x 3/4" Spinlock Bolt | 9904.2201 | 12 |
| 25C | 3/8"-16 x 1" Socket Head Cap Screw (For Sprocket) | 9904.9202 | 6 |
| 25D | 1/2"-13 x 1" Hex Head Bolt (For Motorplates)..... | 9904.1402 | 2 |
| 25E | 1/4"-20 x 3/4" Hex Washer Head Black Zinc Screw (For Chainguard) | 9904.1071 | 2 |
| 25F | 1/4"-20 x 1/2" Hex Washer Head Tap Tight Screw (For Chainguard) | 9904.1070 | 2 |
| 25I | 5/16"-18 x 5/8" Hex Head Flanged Bolt (For Frame Ass'y)..... | 9904.1159 | 8 |
| 27A | 3/8"-16 Spinlock Nut | 9904.6200 | 14 |
| 27B | 1/4"-20 Small Flange Spinlock Nut (For Chainguard) | 9904.6000 | 2 |
| 27C | 1/2"-13 Spin Lock Nut (For Motorplate)..... | 9904.5400 | 2 |
| 27D | 5/16"-18 Hex Top Lock Nut (For Frame Ass'y) | 9904.5602 | 8 |
| 28A | 3/8" Flat Washer | 9954.0007 | 4 |
| 28B | Sprocket Spacer (1" O.D. x 0.381" I.D. x 1/2" Thick) | 9954.0015 | 6 |
| 28C | 1/2" Hub Spacer, 3/16" Thick (Plastic) | 9954.0020 | 4 |
| 28D | 1500 Disc Washer for 1/2" Hub | 9965.0040 | 2 |
| 28E | 1" Hub Spacer, 1/8" Thick (Plastic) (EFH1500 Only) (Not Shown)..... | 9954.0021 | As Req'd |
| 30 | 1/2" Hub Pipe Cap for 1500 Series | 9965.0013 | 1 |
| 34A | 1/2" Welded Iron Pipe Hub (Specify Model and Fittings) | 9901.0610 | 1 |
| 34A | 1/2" Welded 304 SS Hub (Specify Model and Fittings) (EFL1500 Only) | 9901.0604 | 1 |
| 34B | 1/2" Welded 304 SS Barstock Hub (Specify Model and Fittings) (EFH1500 Only) | 9901.0634 | 1 |
| 41A | 1/2" 90 Deg FxF Steel 5000 PSI Super Swivel Jt (AFLAS Seals) | 9927.8551 | 1 |
| 41A | 1/2" 90 Degree FxF 3,000 PSI Oxygen Super Swivel Jt (Viton Seals) (EFL1500) | 9927.8537 | 1 |
| 41B | 1/2" 90 Degree MxF 6,000 PSI Oxygen Super Swivel Jt (Viton Seals) (EFH1500) | 9927.8177 | 1 |
| 72A | 112T35 x 13-3/8" Dia. Disc Sprocket (Steel E-Coated) | 9910.1321 | 1 |
| 87 | Anodized Threaded Spacer Pipe | Spec Model | 4 |
| Optional Removable Direct Crank Rewind | | | |
| 55A | 3/8" Shoulder Bolt with Nut..... | 9914.0511 | 1 |
| 55B | Removable Hand Crank (Includes 55A & 55C)..... | 9914.0012 | 1 |
| 55C | Black Plastic Handle | 9914.0506 | 1 |
| 55D | 1/2" Adaptor for Removable Hand Crank on 1500 Series | 9914.0053 | 1 |
| Electric Motor Only Parts | | | |
| 25H | 5/16"-18 x 5/8" Spinlock Bolt (For Electric Motor) | 9904.2159 | 4 |
| 58 | AN-239 12V DC Face Mount 1/5 HP 420 RPM Motor..... | 9915.0040 | 1 |
| 58 | AN-227 12V DC Face Mount 1/3 HP 650 RPM Motor (Optional) | 9915.0042 | 1 |
| 58 | AN-250 12V DC Face Mount 1/12 HP 220 RPM Motor (Optional) | 9915.0044 | 1 |
| 66A | Electric Motor Mounting Plate for Trapezoid Frame w/ 25H (Steel E-Coated) . | 9923.0006 | 1 |
| 72B | 11T35 x 1-3/4" Motor Sprocket for Electric Motor | 9910.1119 | 1 |
| Air Motor Only Parts | | | |
| 25G | 1/4"-20 x 1/2" Spinlock Bolt (For Air Motor) | 9904.1058 | 3 |
| 57A | #4 AM Gast Air Motor (4 AM NRV-143) w/ Speed Control Muffler (57E) | 9918.1122 | 1 |
| 57B | #3420 Schrader Valve for #4 AM Air Motor | 9919.0004 | 1 |
| 57C | 1/4" MxM NPT x 18" Long Air Hose | 9919.0007 | 1 |
| 57D | 1/4" MxF 90 Degree Street Elbow for #4 AM Air Motor | 9950.0013 | 1 |
| 57E | 1/4" MNPT Speed Control Muffler for #4 AM Air Motor | 9919.0006 | 1 |
| 66B | Air Motor Mounting Plate for Trapezoid Frame w/ 25G (Steel E-Coated) | 9923.0013 | 1 |
| 72C | 9T35 x 1-3/4" Motor Sprocket for Air Motor | 9910.1015 | 1 |