

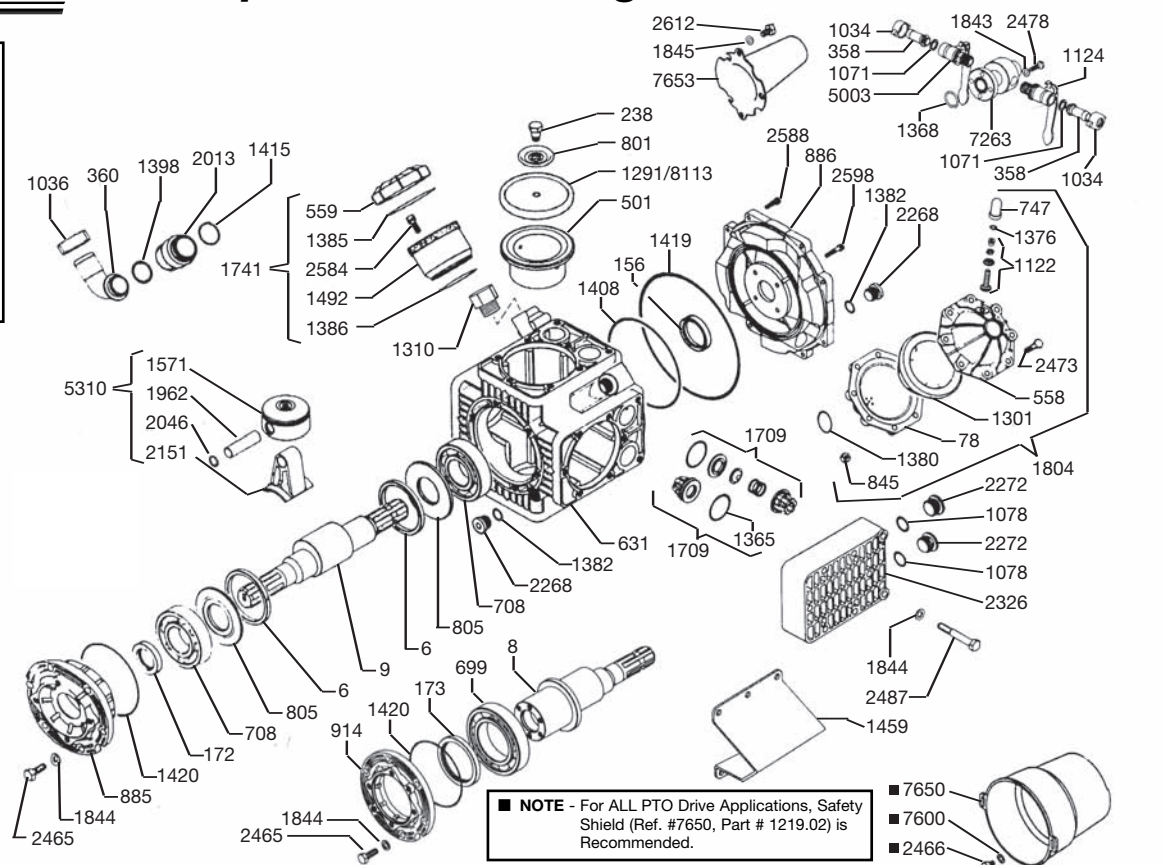


KAPPA-120 & KAPPA-120/CC

Exploded View Diagram and Parts List

KAPPA-120 PUMPS

Require **84 oz. UDOR LUBE**,
or SAE 30W
Non-detergent
Oil



NOTE - For ALL PTO Drive Applications, Safety Shield (Ref. #7650, Part # 1219.02) is Recommended.

KAPPA-120 & 120/CC

REF#	PART#	DESCRIPTION	QTY	REF#	PART#	DESCRIPTION	QTY
6	0001.08	Retainer Ring	2	1386	1101.33	O-Ring	1
8	0002.66	Crankshaft (KAPPA-120)	1	1398	1101.42	O-Ring	1
9	0002.64	Crankshaft (KAPPA-120/CC)	1	1408	1101.63	O-Ring	1
78	0003.10	Pressure Accumulator	1	1415	1101.77	O-Ring	1
156	0007.02	Seal	1	1419	1101.80	O-Ring	1
172	0007.34	Seal	1	1420	1101.71	O-Ring	1
173	0007.35	Seal (KAPPA-120)	1	1459	1202.36	Mounting Rails	2
238	0102.03	Diaphragm Bolt	4	1492	1203.30	Oil Reservoir	1
358	0202.19	Discharge Barb	2	1569	1205.06	Piston	4
360	0202.84	Suction Elbow	1	1709	6006.08	Valve Assembly	8
501	0206.28	Piston Sleeve	4	1741	6033.02	Oil Reservoir Assembly	1
558	0208.21	Accumulator Head	1	1804	6031.02	Accumulator Assembly	1
559	0208.22	Oil Cap	1	1843	1403.07	Washer	4
631	0209.33	Pump Body	1	1844	1403.09	Washer	26
699	0214.03	Bearing (KAPPA-120)	2	1845	1403.10	Washer	2
708	0214.16	Bearing	2	1962	1502.01	Connecting Rod Pin	4
747	0218.01	Air Valve Cap	1	2013	1504.04	Nipple	1
801	0301.07	Retainer Washer	4	2046	1506.02	Snap Ring	8
805	0301.34	Washer	2	2151	1519.24	Connecting Rod	4
845	0303.01	Nut	8	2268	1603.32	Body Plug	2
885	0501.81	Bearing Retainer (KAPPA-120/CC)	1	2272	1603.A3	Head Plug Brass	8
886	0501.80	Body Flange	1	2326	1604.51	Head	4
914	0501.82	Bearing Retainer (KAPPA-120)	1	2465	1804.03	Bolt	6
1034	0604.09	Discharge Barb Nut	2	2466	1804.06	Bolt	2
1036	0604.48	Suction Nut, Brass	1	2473	1804.54	Bolt	8
1071	0605.05	Gasket	2	2478	1804.68	Bolt	4
1078	0605.42	Aluminum Gasket	8	2487	1804.25	Bolt	32
1122	0608.16	Air Valve Assembly	1	2584	1805.06	Bolt	3
1124	0608.45	Ball Valve, Left	1	2588	1805.21	Bolt	8
1291	0903.02	Piston Diaphragm (BUNA-N) optional	4	2598	1805.31	Bolt	4
*1301	0903.16	Accumulator Diaphragm	1	2612	1805.47	Bolt	2
1310	1001.04	3/4" Adapter Fitting	1	5003	0608.46	Ball Valve, Right	1
*1365	1101.01	O-Ring	8	5310	6015.36	Piston/Rod Assembly	4
1368	1101.04	O-Ring	1	7263	0508.13	Discharge Manifold	1
1376	1101.16	O-Ring	1	7600	1403.36	Washer	2
1380	1101.25	O-Ring	1	7650	1219.02	PTO Safety Shield, optional	1
1382	1101.29	O-Ring	2	7653	1219.15	Thru-Shaft Protector	1
1385	1101.32	O-Ring	1	*8113	0903.34	Piston Diaphragm (DESMOPAN)	4

* Parts Included in Diaphragm Repair Kit - #8700.22. (Also available in Buna-N - #8700.21.)



KAPPA-120 & KAPPA-120/CC

High Pressure, High Volume Diaphragm Pumps

KAPPA-120 high pressure, high volume diaphragm pumps are excellent for various horticultural and agricultural spraying applications. Simplicity of design and common parts allow easy and affordable maintenance.

Liquid handling parts are anodized aluminum, brass and stainless steel. Pulsation dampener, control valve and pressure gauge are standard.

Splined Q2 bushing is available for pulley drive applications.

For industrial uses and spraying applications not listed, please consult UDOR U.S.A.

For all PTO drive applications, safety shield Part # 1219.02 is recommended.

For Thrushaft protection, part # 1219.15 is recommended.



SPECIFICATIONS

Maximum Flow	35 GPM
Maximum Pressure.....	700 PSI
Maximum Pump Speed	540 RPM
Maximum Temperature	140°F
Ports	
Inlet	1-1/2" Hose Barb
Discharge	3/4" FNPT & (2) 1/2" Hose Barb
Bypass	1" Hose Barb
Dimensions	
KAPPA-120/CC	L-14" x W-19" x H-16.5"
KAPPA-120/GR.....	L-21.5" x W-19" x H-16.5"
Weight	
KAPPA-120/CC	105 lbs.
KAPPA-120/GR.....	125 lbs.
Diaphragm Material	
Standard.....	DESMOPAN
Optional	BUNA-N

NOTE - Protect pumps from freezing. If freezing conditions exist, flush pump and system with a 50/50 mixture of antifreeze and water.

KAPPA-120 & 120/CC