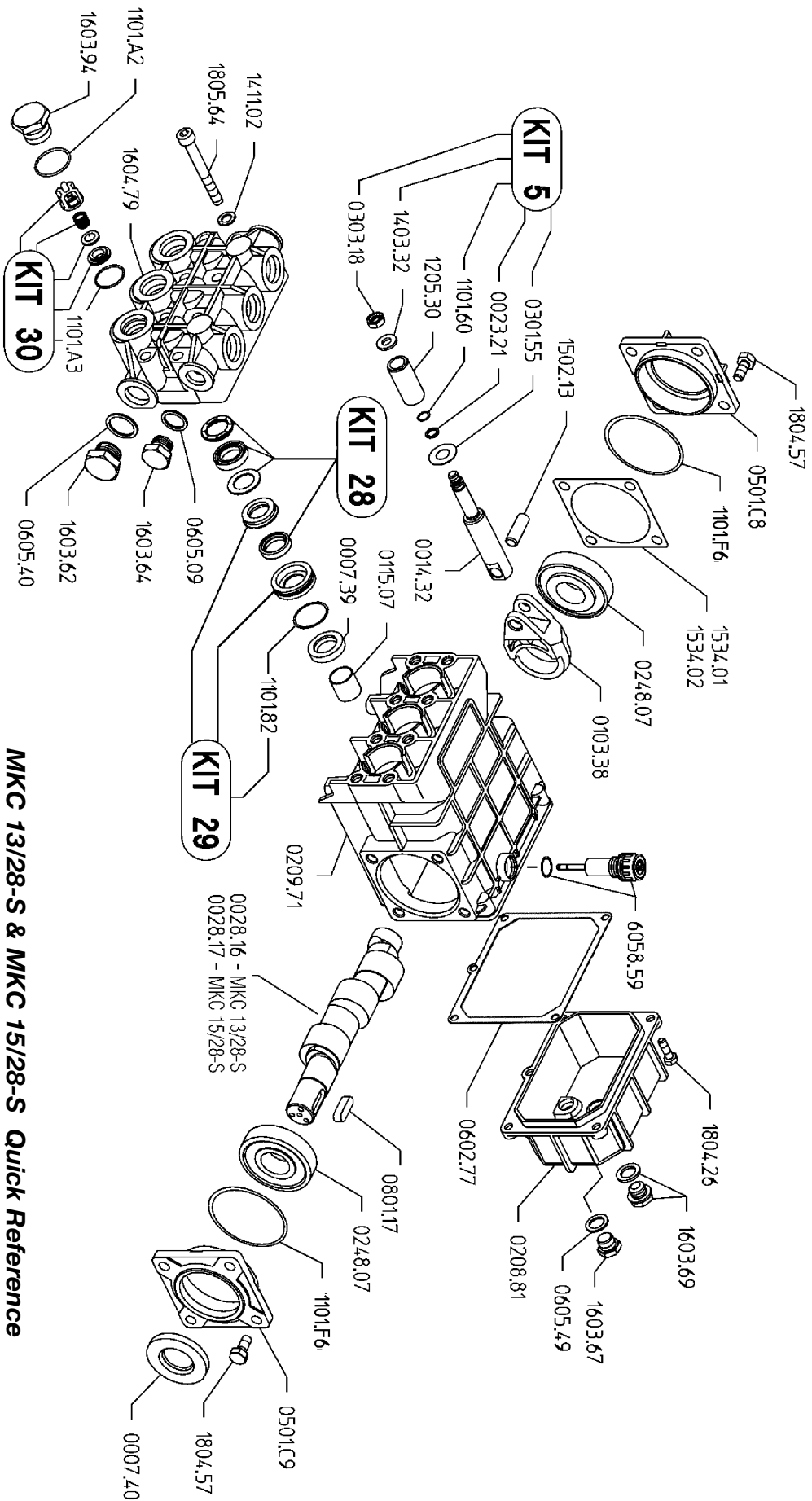


MKC 13/28-S & MKC 15/28-S



MKC 13/28-S & MKC 15/28-S Quick Reference

| | | | |
|------------------|------------------------------|-----------------------|--------------|
| Max. Flow | MKC 13/28-S.....3.5 GPM | Valve Kit..... | 04-KIT UD-30 |
| | MKC 15/28-S.....4.0 GPM | Seal Kit..... | 04-KIT UD-28 |
| Maximum Pressure |4000 PSI | Brass Kit..... | 04-KIT UD-29 |
| Rated Pump Speed |1450 RPM | Plunger Bolt Kit..... | 04-KIT UD-5 |
| Oil Capacity |28 oz. UDOR LUBE | Plunger Part #..... | 04-1205.30 |
| | or SAE 30W Non-Detergent Oil | Plunger Diameter..... | 18 MM |

MKC 13/28-S
MKC 15/28-S