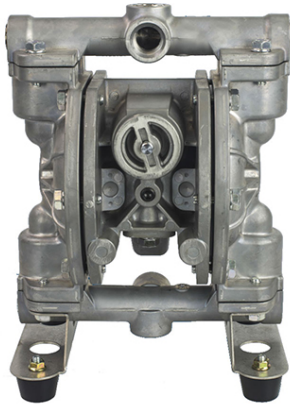


EXPLODED VIEW & PARTS LISTING

Air Operated Double Diaphragm Pump

Model: G15AT
Part # 854701



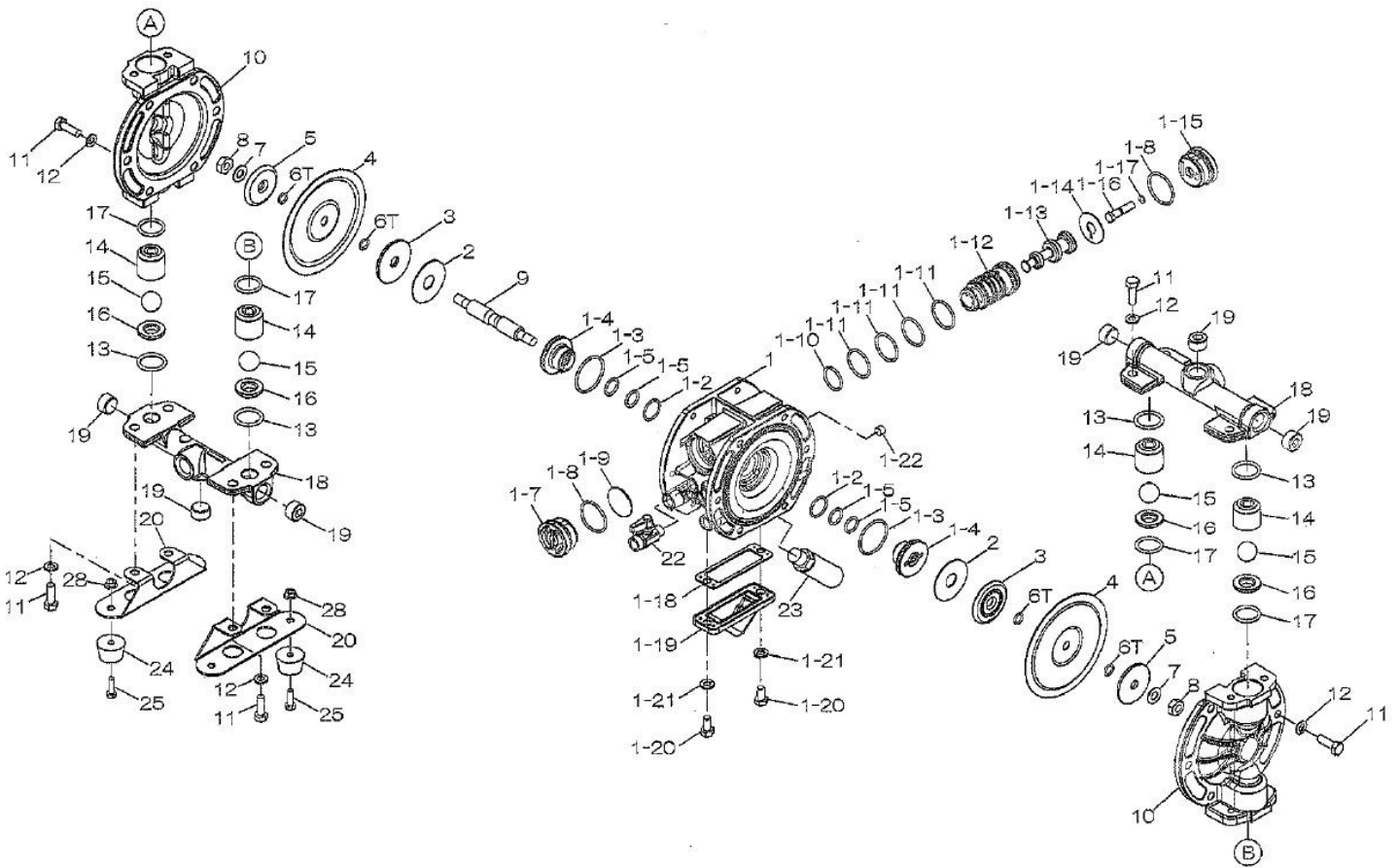
To Purchase:

- ☎ 800-990-7867
- ✉ sales@yamadapump.com
- 📍 Find My Rep

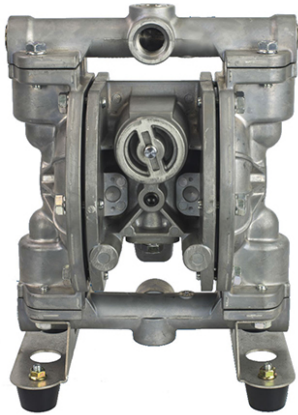
More Information:

- ▶ YouTube: @yamadapump
- 🌐 yamadapump.com
- Data Sheets | CAD Drawings | Manuals Literature | BOM | Performance Curves*

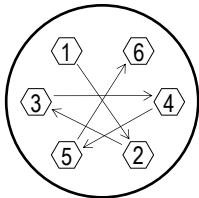
Trial Program



Air Operated Double Diaphragm Pump



Ref. No.	Part No.	Description	Qty.	Reorder
1	805130	Body Assy.	1	
1-1	717082	Body	1	
1-2	684725	O-ring	2	
1-3	686733	O-ring	2	
1-4	773279	Guide Bush	2	
1-5	640015	O-ring	4	
1-7	716917	Cap A	1	
1-8	686734	O-ring	2	
1-9	773280	Cushion	1	
1-10	685276	O-ring	1	
1-11	686029	O-ring	4	
1-12	716950	Sleeve	1	
1-13	805131	Spool Assy.	1	
1-14	773281	Cushion	1	
1-15	716918	Cap B	1	
1-16	717035	Reset Button	1	
1-17	640002	O-ring	1	
1-18	773283	Gasket	1	
1-19	717083	Cover	1	
1-20	631916	Wave Washer	2	
1-21	611145	Bolt 8x1.25x16	2	
1-22	634360	Plug 1/8"	1	
2	773278	Cushion	2	
3	716923	Center Disk	2	
4	773276	Diaphragm	2	
5	716924	Center Disk	2	
6T	643007	O-ring	2	
7	681303	Lock Washer M10 SS	2	
8	683636	Nut M10x1.50	2	
9	716925	Center Rod	1	
10	716920	Out Chamber	2	
11	611149	Bolt	20	
12	631916	Wave Washer	20	
13	643025	O-ring	4	
14	716921	Ball Guide	4	
15	771524	Ball	4	
16	711227	Valve Seat 15AL	4	
17	643130	O-ring	4	
18	717084	Manifold	2	
19	686789	Plug 1/2" NPT	6	
20	716926	Base	2	
22	683055	Ball Valve	1	
23	682520	Silencer	1	
24	771123	Foot Rubber	4	
25	611101	Bolt M6x1.0x20	4	
28	682817	Nut w/Flange M6x1.0	4	
KIT	KG15-AT	LIQUID END KIT		
KIT	KG15AM-M	AIR MOTOR KIT		



Tightening torque for center rod and out chambers.

Center Rod 160 in-lbf {18 N-m}
Out Chambers 105 in-lbf {12 N-m}

Tightening torque for manifold retainer bolts.

AT 160 in-lbf {18 N-m}

General Tools:

- Socket wrench - 10mm, 13mm, 17mm
- Hexagonal box wrenches - 5mm
- Open-end wrench - 10mm, 13mm, 17mm

Miscellaneous:

- Assembly Oil—turbine oil none additional class 1 (equivalent to ISO VGA32 grade)
- Urea grease grade (NLGI) No. 2
- Thread locking agent (equivalent to LOCTITE® 222)

Customer Notes

Model #: _____

Description: _____

Serial #: _____

Date Installed: _____

Department Location: _____

Tag/Project: _____